

# Three Arctic Islands

## Spitsbergen, Greenland and Iceland

### (Southbound)

Onboard Ultramarine & Ocean Explorer



# Expedition Overview



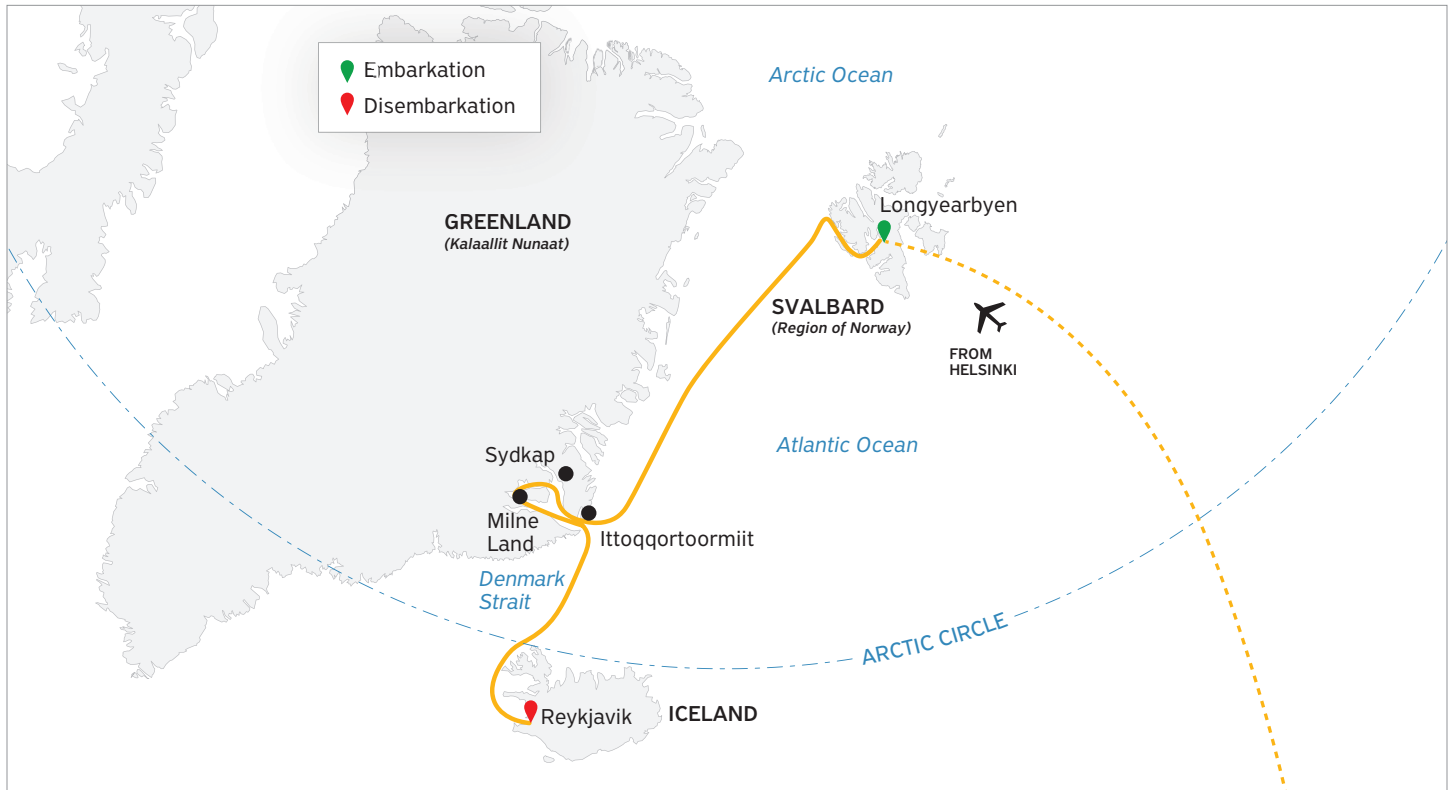
Photos captured with a telephoto lens from a responsible distance, following regulatory/AECO guidelines.

## The Arctic in Three Acts

Our 15-day **Three Arctic Islands: Spitsbergen, Greenland and Iceland** itinerary begins in Spitsbergen—the Wildlife Capital of the Arctic—before venturing into the remote, fjord-strewn landscapes of East Greenland and concluding amid Iceland’s dramatic volcanic terrain. Over 15 days, you’ll stand before towering glacier fronts, navigate rugged fjords, and step onto windswept tundra rich with history, including ancient Thule settlements. Along the way, you may encounter walruses, muskoxen, polar bears, and reindeer, while thousands of seabirds fill the skies—an immersive journey through some of the most extraordinary environments the Arctic has to offer.

- Spot iconic Arctic wildlife—walruses, reindeer, Arctic foxes, and the elusive polar bear
- Witness tens of thousands of cliff-dwelling birds
- Marvel at the glaciers and wildlife of Spitsbergen and East Greenland
- Hike the tundra and explore the fjords of East Greenland
- Cruise in a Zodiac to explore diverse landscapes
- Visit the Westfjords, a hidden gem of Iceland

# Day by Day Itinerary



## Day 1

Arrive in Helsinki,  
Finland

Arrive in the Finnish capital and make your way to the group hotel located right at Helsinki airport—which is included in your Charter Flight & Hotel Package. You will have the rest of the day to explore explore the many museums, galleries and restaurants, relax at a Finnish sauna or wander the vibrant Design District. If you do plan to visit Helsinki city center, you can take the convenient 40-minute rail service from the airport.

## Day 2

Fly to Longyearbyen,  
Svalbard & Embark

After breakfast, the group will transfer to the airport and board our private charter flight to Longyearbyen, Spitsbergen's largest settlement, as part of the Charter Flight & Hotel Package. As you embark this afternoon, you'll enjoy great views of the mountainous landscape that serves as a backdrop for this seaside town.

## Days 3–6

Exploring Spitsbergen,  
Svalbard

Exploring Spitsbergen, the largest island of the Norwegian Svalbard archipelago, rewards you with austere beauty and opportunities to spot its abundant wildlife. Here, you'll visit spectacular glacier fronts and tundra in full bloom, with walrus, polar bears and Svalbard reindeer amongst your possible wildlife sightings. Birders will be thrilled to see Arctic terns, skuas, Brünnich's guillemots, black-legged kittiwakes and ivory gulls. If conditions allow, you could sail within 10 degrees of the North Pole.

## Three Arctic Islands Spitsbergen, Greenland and Iceland (Southbound)

### Days 7 & 8

#### At Sea: Cruising The Greenland Sea

While sailing south through the Greenland Sea, your Expedition Team will teach you about the wildlife and history of Greenland, your next stop. On deck, you'll learn to identify seabirds on the wing. Take in a presentation, share your photos, sip an icy cocktail in the bar or watch a film—there are many things to do during your time at sea.

---

### Days 9–12

#### Exploring East Greenland

During your tour of Greenland's remote eastern coast, you'll enjoy Zodiac cruises and shore visits to several locations. Explore the remains of ancient Thule settlements and keep an eye out for grazing muskoxen—40 percent of the world's muskoxen population lives here. Finally, you will sail through spectacular Scoresbysund, the birthplace of many icebergs and, some say, the most beautiful fjord system in the world. We plan to visit Ittoqortoormiit, the most remote community in East Greenland.

---

### Day 13

#### At Sea: Crossing the Denmark Strait

As we sail south, the Denmark Strait is your pathway toward Iceland. Your Expedition Team will keep you informed and entertained with presentations about the history of exploration in the Arctic and the seabirds you'll see soaring above your ship.

---

### Day 14

#### The Westfjords: Iceland's Hidden Gem

The seldom-visited Westfjords—where land meets sea in the most dramatic fashion—are often known as "Iceland's best-kept secret." This rugged peninsula at the country's remote northwestern tip is rife with fjords, mountains, tumbling cliffs, gushing waterfalls, colorful beaches, rolling green hills, high moorlands dotted with rocky outcrops, small lakes, and the occasional shaggy Icelandic sheep or grazing pony.

A few modest outposts of civilization, in the form of small fishing communities nestled along the fjords and shores of the Denmark Strait, face out into the mighty Atlantic, keeping alive a maritime heritage that stretches back to the Viking days.

The Westfjords are the least developed of Iceland's coastal areas and, consequently, the wildest. Depending on the conditions, guests will venture into this territory on a Zodiac cruise or a guided shore landing at unspoiled wilderness sites where they can hike and explore on foot. One of the many highlights is Mongufoss, one of Iceland's most remote and beautiful waterfalls.

---

### Day 15

#### Disembark In Reykjavik, Iceland

You'll disembark in Reykjavik, Iceland's capital, after breakfast. If you have booked post-expedition accommodation, we provide a transfer to a central downtown location.

# Arrival & Departure Details



\* Arrive at the hotel on Day 1 by 3pm or earlier. Day 1 includes a mandatory briefing.  
✈️ International flights are not included in the cost of the voyage.



## Day 1 Arrive in Helsinki, Finland

- Arrive in the Finnish capital
- Explore Helsinki for an afternoon on your own

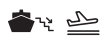
Arrive in the Finnish capital and make your way to the group hotel located right at Helsinki airport—which is included in your Charter Flight & Hotel Package. You will have the rest of the day to explore explore the many museums, galleries and restaurants, relax at a Finnish sauna or wander the vibrant Design District. If you do plan to visit Helsinki city center, you can take the convenient 40-minute rail service from the airport.



## Day 2 Fly to Longyearbyen, Svalbard & Embark

- Fly to Longyearbyen, Svalbard
- Embark on your three-Arctic-island voyage

After breakfast, the group will transfer to the airport and board our private charter flight to Longyearbyen, Spitsbergen's largest settlement, as part of the Charter Flight & Hotel Package. As you embark this afternoon, you'll enjoy great views of the mountainous landscape that serves as a backdrop for this seaside town.



## Final Day Disembarkation in Reykjavik and Onward

- Disembark in Reykjavik after breakfast

Your ship is scheduled to arrive in Reykjavik between 7 a.m. and 8 a.m. local time. After breakfast, and once the ship has docked, you will have time to bid farewell to your Expedition Team and shipmates before completing your disembarkation. The process takes about an hour. After disembarkation, you will transfer to a central downtown location.

## Three Arctic Islands Spitsbergen, Greenland and Iceland (Southbound)

### Airport Transfers

- You won't need an airport transfer in Helsinki
- Arrange a transfer in Reykjavik only if you're staying on.

#### Helsinki Airport

Included hotel accommodations are provided at the Helsinki airport; therefore, transfers are not required nor provided.

#### Reykjavik Airport

Your expedition ends at a convenient drop-off point in Reykjavik city center. If you're extending your stay in Iceland, you will need to arrange a transfer to the airport or to your accommodations.

### Luggage Restrictions

This expedition includes charter flights. Your package includes one checked bag and one carry-on bag. Luggage weight restrictions on these flights are typically lower than those on international carriers. There is no option to pay for additional luggage. Specific weight limits will be confirmed in your final travel documents.



Photos captured with a telephoto lens from a responsible distance, following regulatory/AECO guidelines.



# Book Your Next Adventure

Contact your travel professional or a Quark Expeditions Polar Travel Advisor.

**Toll free and local numbers:**

**North America**  
(Toll Free) 1 888 332 0008

**U.K.**  
Tel +44 203 514 2712  
(Toll Free) 0 808 120 2333

**Australia**  
Tel +61 2 72580333  
(Toll Free) +61 1800 953518

**France**  
Tel +33-1 80 14 01 05  
(Toll Free) 08 05 08 66 46

**Photo Credits:** NewfoundlandAndLabradorTourism; Acacia Johnson; David Merron; Nicky Souness; Samantha Crimmin; Sam Edmonds; Michelle Sole; Cindy Miller Hopkins; Gajan Balan; Jonas Fellenstein; Brad Flowerdew; Nicolas Singh; Adobe Stock.

Updated May 14, 2026

P O L A R

O B S E S S E D

S I N C E

1 9 9 1

