

Antarctic Marine Mammals: The World of Whales & Seals

Onboard World Voyager



Expedition Overview

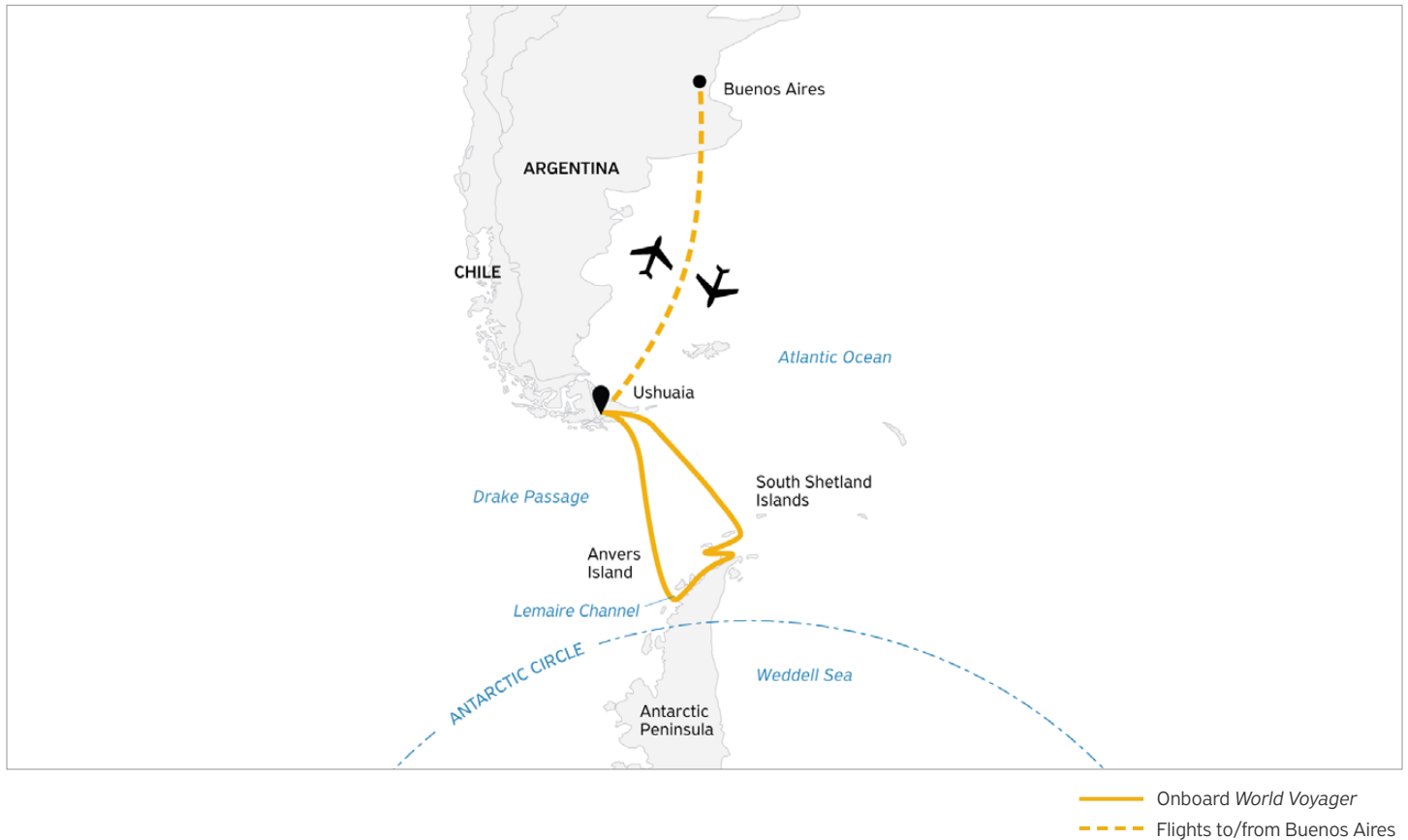


Into the Fascinating World of Whales and Seals

Our 11-day **Antarctic Marine Mammals: The World of Whales & Seals** itinerary offers guests the rare chance to actively engage in citizen science—while exploring the Antarctic Peninsula and South Shetland Islands. Co-developed by Ari Friedlaender, founder of the renowned Friedlaender Lab, this hands-on itinerary is designed to maximize observations of migratory whales, including minke, humpback, and fin. A research associate from HappyWhale will guide guests in identifying individual whales for global conservation projects. At the onboard Science Hub, guests connect with experts, participate in meaningful research, and help protect this pristine polar habitat for whales, seals, and all marine life.

- Engage with globally-respected scientists as they collect data on Antarctic wildlife, especially whales
- Set foot on the magical 7th Continent
- Explore Antarctica with the best expedition team in the industry
- Participate in hands-on marine mammal identification workshops
- Enjoy presentations on wildlife, history, glaciology and geology by our onboard polar experts

Day by Day Itinerary



Day 1

Arrive in Buenos Aires, Argentina

Upon arriving in this splendid city, known for its vibrant Argentinian culture, European architecture and cosmopolitan vibe, you will independently transfer to the designated group hotel, which is included in your Charter Flight & Hotel package.

Day 2

Fly to Ushuaia and Embark

After an early breakfast at the hotel, the group will transfer to the airport and board our private charter flight to Ushuaia, Argentina. Upon arrival, you will be transferred from the airport to a central downtown location to explore this quaint port town on your own before making your way to the designated meeting spot. After a late afternoon embarkation, you will sail along the historic Beagle Channel, which transects the Tierra del Fuego archipelago in the extreme south of South America. Excitement builds in anticipation of your next stop: the Antarctic.

Antarctic Marine Mammals The World of Whales & Seals

Day 3

At Sea | Drake Passage Southbound

Crossing the 800-km Drake is considered a rite of passage for many travelers. Traversing this legendary waterway means you'll experience the Antarctic Convergence, where the cold, northward-flowing Antarctic waters meet the warmer, southward-flowing water of the sub-Antarctic. The mixing of cold and warm waters creates a nutrient-rich feeding ground, especially for whales and other marine mammals. Guests are encouraged to keep binoculars close at hand—and to be prepared for Expedition Team members to announce any whale sightings.

The team of guest scientists will be introduced early in the voyage. Ari Friedlaender, who co-developed this itinerary, and members of his team from the Friedlaender Lab, are global authorities on the underwater behavior and ecology of marine mammals, particularly whales. Guests will also meet a research associate with the Happywhale platform, which enables citizens to upload their whale photos to help identify species and, possibly, individual whales. ~~(See bios).~~

Day 4

At Sea | Sailing Toward Antarctica

The second day of your Drake Passage crossing is an ideal time to attend scheduled polar presentations that will enhance your Antarctic experience. It's also an excellent opportunity to visit the Science Hub on Deck 4 ~~(see page 5)~~, an instrumental part of your voyage. Spend time on deck watching for whales, which increase in number as we approach the Peninsula—and remember to upload your whale photos to the Happywhale platform.

Days 5–7

Antarctic Peninsula

The timing of this voyage maximizes opportunities to observe various whale species along the Antarctic Peninsula. After the ice recedes in October and November, the food chain begins to re-establish itself. Whales, seals and other marine mammals are drawn to these rich feeding grounds—especially for the krill. By February and March, these creatures, which have been intensely feeding, are satiated and relaxed, making them more easier to spot. In addition to the Zodiac and paddling excursions, we plan to spend a lot of time on the outer decks and other vantage points on the ship to spot—and photograph—wildlife.

We'll spend our days in key marine mammal habitats of the Gerlache Strait and remote inner glacial bays. Over the next three days, we aim to explore whale hotspots such as Charlotte Bay, Portal Point, Graham Passage, Errera Channel, Cuverville Island, Andvord Bay, Fournier Bay and Dallmann Bay.

Past whale sightings in these areas have included minke, humpback, fin, orca and the elusive, deep-diving Arnoux's beaked whale.

Antarctic Marine Mammals: The World of Whales & Seals is our only itinerary during which we'll deploy hydrophones—underwater microphones that detect and record sound below the surface. You will have opportunities—during Zodiac cruises and paddling programs—to accompany Friedlaender Lab scientists as they deploy hydrophones to monitor and study marine mammal behavior, such as the vocalizations of whales.

Four scientists will accompany guests in Zodiacs, with one hydrophone shared between two groups. Speakers will enable participants to listen for and, hopefully, hear whale sounds beneath the ocean surface. Engaging with scientists who are actively collecting and collating data that can be shared in real time on the water, and, through digital visual aids, brings marine biology to life in a way that transcends the water line. This activity is also available to *World Voyager* guests who join the Stand-Up Paddle Boarding (SUP) program.

Antarctic Marine Mammals The World of Whales & Seals

In addition to the citizen science programming, this itinerary will also feature the wonders of Antarctica: penguins, seals, immense glaciers, snow-capped mountains, icebergs, shore landings, and the polar plunge.

Day 8 South Shetlands

Rounding out our marine mammal experiences, we hope to witness southern elephant seals in the rugged and fabled South Shetland Islands. We'll also keep our fingers crossed for sightings of fin whales. We'll explore this geological and historic archipelago while prioritizing shore landings, which offer further opportunities for wildlife sightings.

Arriving in March allows us the rare opportunity to potentially explore key excursion sites such as Hannah Point, which is deemed a Restricted Area from early to mid-season. Massive populations of elephant seals and southern giant petrels make for awe-inspiring experiences. As with any expedition, shore landings along the coast are dependent on favorable weather.

Day 9 At Sea: Drake Passage Northbound

Today is the start of the journey back across the Drake Passage. This is an excellent opportunity to spend more time engaging with the Friedlaender Lab scientists, or attend one of the scheduled polar presentations.

Day 10 At Sea: Last Sailing Day

Today is your last opportunity to visit Quark Expeditions' new Science Hub and contribute to citizen science that will support marine mammal conservation efforts. In the words of Sir David Attenborough: "No one will protect what they don't care about. And no one will care about what they have never experienced."

Day 11 Disembark in Ushuaia and Fly to Buenos Aires

You will arrive in Ushuaia in the morning and disembark after breakfast. You will then make your way towards your group charter flight to Buenos Aires.

Arrival & Departure Details



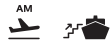
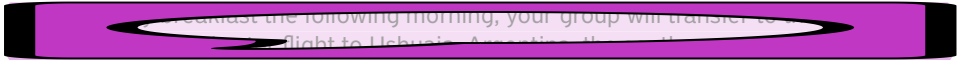
* Arrive anytime on Day 1 or earlier. Day 1 includes an optional briefing.
** Consider booking your international flight home after the Final Day as charter flight times may vary.
✈️ International flights are not included in the cost of the voyage.



Day 1 Arriving in Buenos Aires and Hotel Night

- Fly to and spend the night in Buenos Aires
- Get your luggage weighed and tagged

Upon arrival in Buenos Aires, you will make your way to the designated group hotel, which is included in your Charter Flight & Hotel Package. A presentation room will be open from 12 p.m. to 8 p.m. for luggage weighing and tagging. A Quark Expeditions representative will be available to answer your questions and provide information about the next day's flight and ship embarkation.



Day 2 Ushuaia and Embarkation

- Group transfer to the airport after breakfast
- Charter flight to Ushuaia

In Ushuaia, your Charter Flight and Hotel Package will allow for some free time to explore this quaint port town. We will transfer the group to the ship for embarkation around 4 p.m.



Disembarkation Day

- Ship arrives back in Ushuaia between 7 a.m. and 8 a.m.
- Disembark after breakfast

Disembarkation in Ushuaia

The ship is scheduled to arrive back at the pier in Ushuaia between 7 a.m. and 8 a.m. After breakfast you will bid farewell to your Expedition Team before completing your disembarkation. This process takes approximately one hour.



- If flying home from EZE, we recommend booking flights departing after 9 p.m.
- If flying from Aeroparque/Jorge Newbery Airport (AEP), consider flights departing after 10 p.m.

Departing from Buenos Aires

Upon arrival in Buenos Aires, you may be able to connect directly with your homeward flight. Our charter flight lands at Buenos Aires international airport (Ministro Pistarini International — EZE). The included flight lands at approximately 5 p.m. We recommend you only select flights departing after 9 p.m. Check your itinerary carefully before booking. Some South America-bound flights originate at Jorge Newbery Airport (IATA code: AEP), which is also known as Aeroparque (IATA airport code: AEP). Due to unpredictable traffic in Buenos Aires, we recommend you only select flights departing Jorge Newbery Airport after 10 p.m. For the absolute safest travel plans, we recommend that you book an extra hotel night in Buenos Aires between flights. Expedition travel is occasionally unpredictable. We also strongly recommend booking flexible international air tickets. Quark Expeditions is not responsible for any air ticket change costs you may incur.

Antarctic Marine Mammals The World of Whales & Seals

Transfers

Arrival transfers from your international flights in Buenos Aires are not included.

Luggage Restrictions

- Travel with one checked bag and one carry-on only.

This expedition includes charter flights. Your package includes one checked bag and one carry-on bag. Luggage weight restrictions on these flights are typically lower than those on international carriers. There is no option to pay for additional luggage. Specific weight limits will be confirmed in your final travel documents.



Photos captured with a telephoto lens from a responsible distance, following regulatory IAATO guidelines.



Book Your Next Adventure.

Contact your Travel Professional
or a Quark Expeditions Polar
Travel Adviser

Photo Credits: ~~(over all Expedition Brochures for the Antarctic 2028/2029 season):~~
Acacia Johnson; David Merron; Nicky Souness; Samantha Crimmin; Sam Edmonds;
Michelle Sole; Cindy Miller Hopkins; Gajan Balan; Jonas Fellenstein; Brad Flowerdew;
Nicolas Singh; Adobe Stock.

Toll free and local numbers:

North America
(Toll Free) 1 888 332 0008

U.K.
Tel +44 203 514 2712
(Toll Free) 0 808 120 2333

Australia
Tel +61 2 72580333
(Toll Free) +61 1800 953518

France
Tel +33-1 80 14 01 05
(Toll Free) 08 05 08 66 46

Updated May 14, 2026

P O L A R

O B S E S S E D

S I N C E

1 9 9 1

