

Antarctic Express

Sail South, Fly North

Onboard Ocean Explorer



Expedition Overview

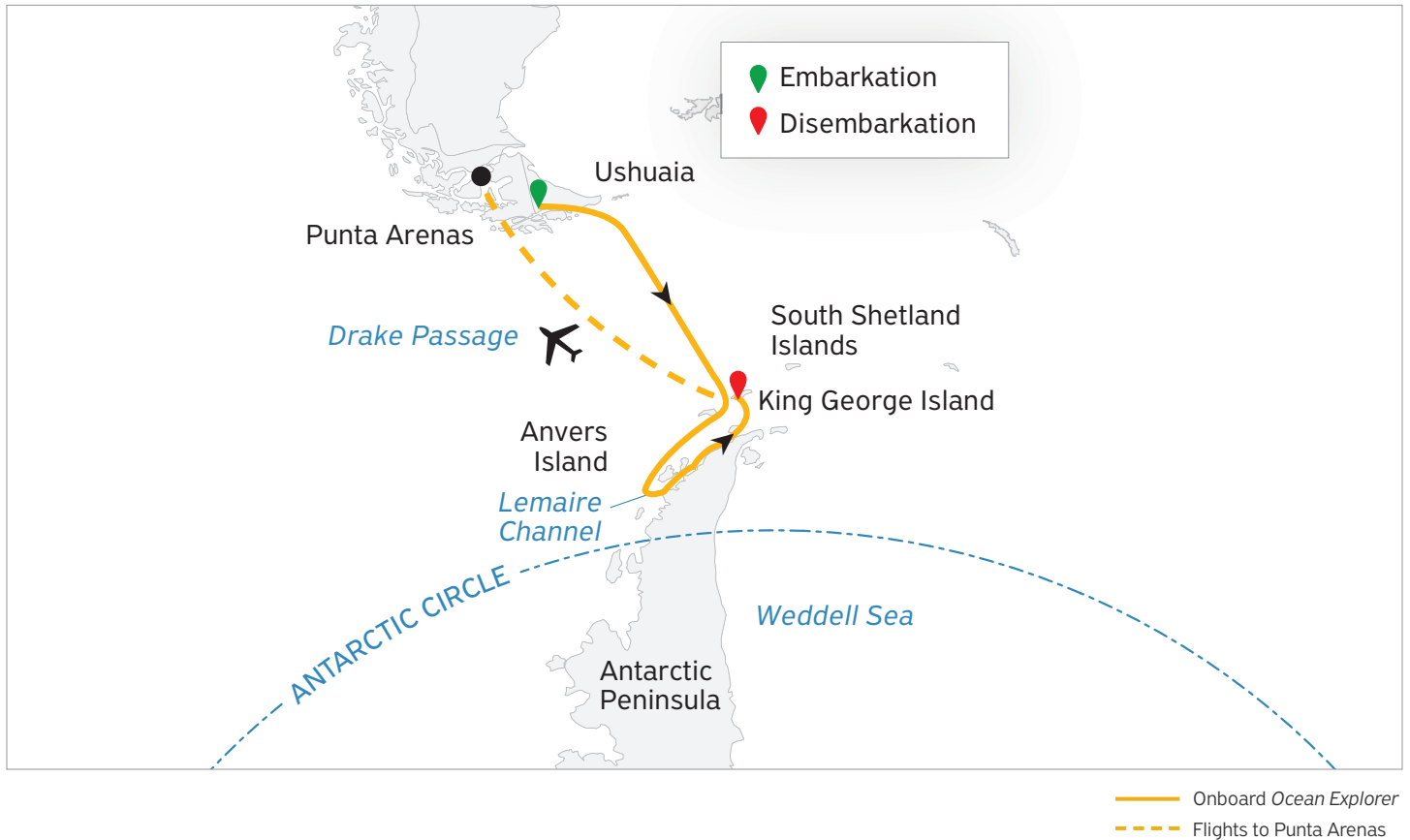


Sail the Drake to Antarctica. Fly back.

Get the best of both worlds on our 10-day **Antarctic Express: Sail South, Fly North**. Achieve a polar rite of passage by crossing the legendary 800-kilometer Drake Passage by ship—and on your return, board a comfortable charter flight at King George Island for a two-hour flight over the infamous waterway. That leaves several full days to experience the wonders of the South Shetland Islands and the Antarctic Peninsula. Expect to encounter minke and humpback whales, along with Adélie penguins, as you explore rugged snow-capped peaks, stark icescapes, and immense penguin colonies thriving in this remote wilderness.

- Embrace a thrilling southbound crossing of the Drake Passage
- Enjoy the speed and ease of a northbound flight from Antarctica
- Spot incredible wildlife, icebergs and more
- Learn about wildlife, history, glaciology and geology from our onboard polar experts
- Experience both Argentina and Chile as part of your journey to the 7th Continent

Day by Day Itinerary



Day 1

Arrival in Ushuaia

You may arrive in Ushuaia at any time on Day 1. Many guests choose to arrive a day or two before embarkation day to explore this quaint port city at the bottom of South America, and the surrounding region. Based on the arrival information you submit in advance, we will arrange for a transfer from the airport to the designated group hotel.

Day 2

Embarkation in Ushuaia

On the morning of Day 2, your luggage will be collected from the hotel lobby and transferred to your cabin on the ship. Guests will meet at a designated location near the pier, usually about 4 p.m., and board the waiting buses for transfer to the ship. After a late afternoon embarkation, we will sail along the historic Beagle Channel, which transects the Tierra del Fuego archipelago in the extreme south of South America. Excitement builds in anticipation of your next stop: the Antarctic.

Antarctic Express Sail South, Fly North

Days 3 and 4

Crossing the Drake Passage

Legendary for its high winds and rolling seas, you may get lucky and have surprisingly calm seas through the Drake Passage. Spend your time in the lounge or chatting with your fellow travelers. As you develop your sea legs during the crossing, our Expedition Team will begin their series of presentations to help prepare you for your upcoming Zodiac and land excursions. You officially enter Antarctica when your ship crosses the Antarctic Convergence, a biological boundary that fluctuates around 60° south.

Days 5–8

South Shetland Islands and Antarctic Peninsula

The most common reaction upon reaching the 7th Continent is a sense of reverence and awe. The experience is beyond words, since few places are as untouched as Antarctica. You will begin to appreciate why this region has long captivated the attention of explorers and travelers alike. Every time we visit Antarctica, we witness something new or unexpected, which means that your expedition will be unlike any other—creating a unique, personal experience.

Each day, you will take Zodiac excursions from the ship to explore glaciated bays, channels and landing sites. Your Expedition Team will take care of you at each landing, whether you are hiking the Antarctic landscape, visiting a research station or observing chinstrap, Adélie and gentoo penguins, all of which can be found here. Keep an eye out for Weddell, fur, crabeater and leopard seals as well as curious whales, such as humpbacks, minke, or perhaps orcas while on a Zodiac cruise. Each excursion will present a new array of creatures to fascinate you and keep your camera busy.

Amid the serene silence of Antarctica, noisy interludes become indelible memories, such as penguins squabbling over prized pebbles, or the boom and crack of a calving glacier.

Every day will be different, having been carefully crafted by your Expedition Team to inspire and educate you about this wonderful part of the world.

Days 9

Disembarkation & Fly to Punta Arenas

With only the Drake Passage ahead, you'll disembark on King George Island before flying to Punta Arenas, Chile. Once you're in Punta Arenas, we'll transfer you from the airport to your designated group hotel. You're then free to explore Punta Arenas and enjoy a final dinner on your own.

Day 10

Depart Punta Arenas

After breakfast, you are free to continue on your own travels or make your way to the Punta Arenas airport for your homeward flights.

Arrival & Departure Details



* Arrive anytime on Day 1 or earlier. Day 1 includes an optional briefing.
✈ International flights are not included in the cost of the voyage.



Day 1 Arriving in Ushuaia and Hotel Night

- Arrive anytime on Day 1
- An airport-to-hotel transfer can be arranged if guests send arrival information in advance
- Look for the Quark representative in the lobby later in the day if you have questions

You may arrive in Ushuaia at any time during Day 1 of your itinerary. Ushuaia and its mountainous surroundings are destinations worth exploring, so we do encourage you to arrive a day or two before your expedition. Based on the arrival information you submit to us, we will arrange for a transfer from the airport to the designated group hotel. A Quark Expeditions representative will be available to answer your questions in the lobby of the hotel in Ushuaia during your optional pre-departure briefing on Day 1 at 6 p.m.



Day 2 Embarkation in Ushuaia

- Luggage collected from the hotel lobby in the morning
- Meet at the pier for the group transfer to the ship
- Ship embarkation usually begins around 4 p.m.

On the morning of Day 2, your luggage will be collected from the lobby of your hotel, transferred to the ship and stored in your cabin. Ship embarkation will occur on Day 2 of your itinerary, usually around 4 p.m.

You and your shipmates will meet at a designated location near the pier, and board the waiting buses for transfer to the ship. Information about embarkation will be posted in your Ushuaia hotel and discussed during your optional predeparture meeting on Day 1.



Disembarkation Day

- Disembark at King George Island
- Catch two-hour flight over the Drake Passage to Punta Arenas
- Included transfer from Punta Arenas airport to the group hotel

Disembarkation at King George Island

Ship disembarkation will generally occur in the late morning, on King George Island. You will be greeted at the beach by transfer buses that will take you to comfortably heated pre-boarding lounges before boarding your flight. Your luggage will be transferred from the ship to the plane. After a two-hour flight, you will land at the Punta Arenas airport (PUQ). We'll transfer you from the airport to your designated group hotel.



Final Day

- Disembark at King George Island
- Catch two-hour flight over the Drake Passage to Punta Arenas
- Included transfer from Punta Arenas airport to the group hotel

After breakfast at the hotel (which included), you are free to continue on your own travels or make your way to the Punta Arenas airport for your homeward flights.

Antarctic Express Sail South, Fly North

Airport Transfers

ARRIVAL

A group transfer in Punta Arenas will take you from the airport to your included hotel.

DEPARTURE

A departure transfer in Punta Arenas is not included. Expedition travel is occasionally unpredictable. We strongly recommend booking flexible international air tickets. Quark Expeditions is not responsible for any air ticket change costs you may incur.

In order to facilitate your transfers, we request that you provide your flight details to Quark Expeditions at least 30 days prior to traveling.

Luggage Restrictions

- Travel with one checked bag and one carry-on only.

Charter Flight Luggage Limit

This expedition includes charter flights. Your package includes one checked bag and one carry-on bag. Luggage weight restrictions on these flights are typically lower than those on international carriers. There is no option to pay for additional luggage. Specific weight limits will be confirmed in your final travel documents.



Photos captured with a telephoto lens from a responsible distance, following regulatory IAATO guidelines.



Book Your Next Adventure

Contact your travel professional or a Quark Expeditions Polar Travel Advisor.

Toll free and local numbers:

North America
(Toll Free) 1 888 332 0008

U.K.
Tel +44 203 514 2712
(Toll Free) 0 808 120 2333

Australia
Tel +61 2 72580333
(Toll Free) +61 1800 953518

France
Tel +33-1 80 14 01 05
(Toll Free) 08 05 08 66 46

Photo Credits: Acacia Johnson; David Merron; Nicky Souness; Samantha Crimmin; Sam Edmonds; Michelle Sole; Cindy Miller Hopkins; Gajan Balan; Jonas Fellenstein; Brad Flowerdew; Nicolas Singh; Adobe Stock.

Updated May 14, 2026

P O L A R

O B S E S S E D

S I N C E

1 9 9 1

 Quark
Expeditions®