

# Antarctic Express

## Fly South, Sail North

Onboard Ocean Explorer



# Expedition Overview

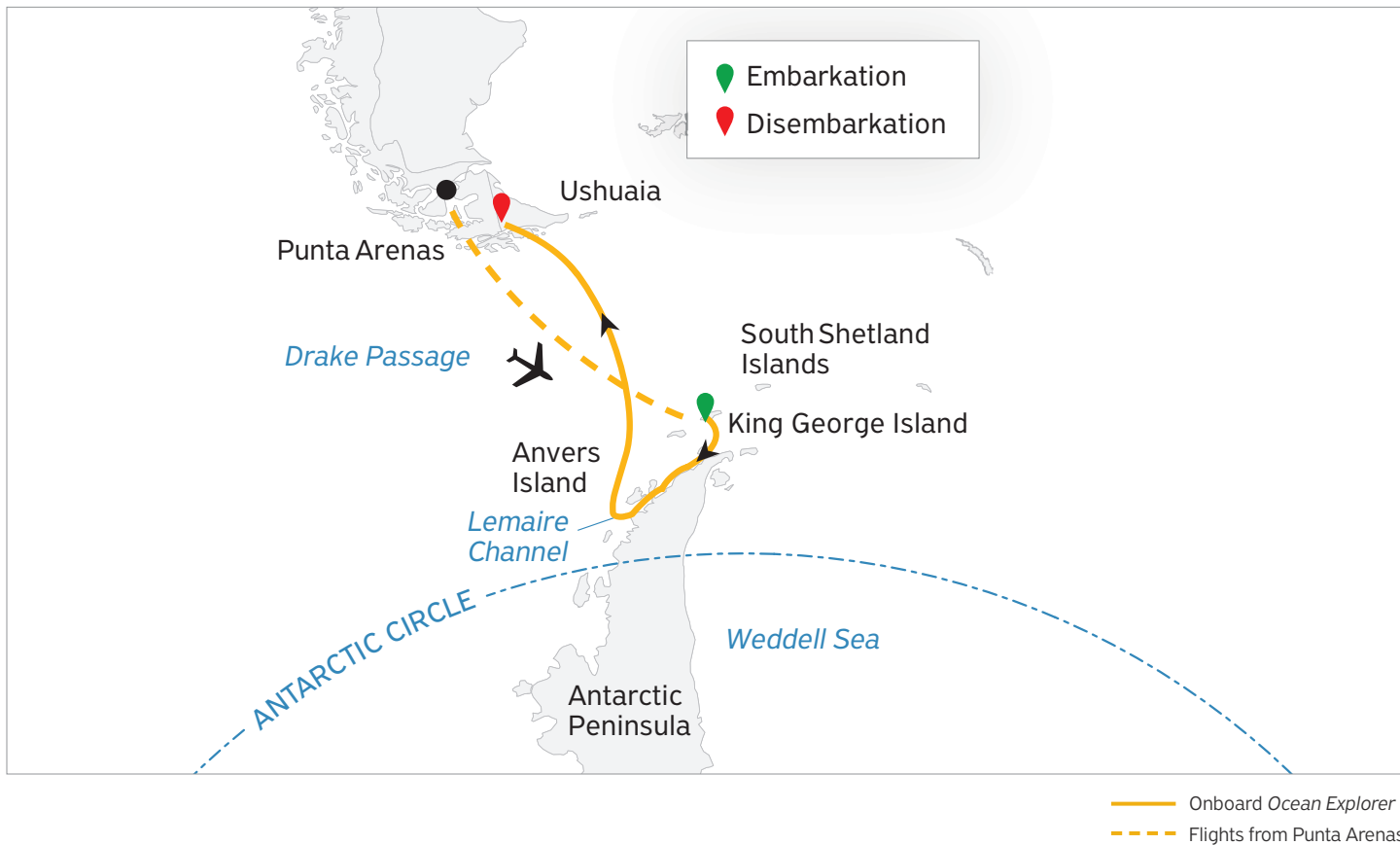


## Fly One Way Across the Drake, Sail the Other

Take the fastest route over the 800-km Drake Passage to Antarctica—a two-hour flight from Punta Arenas, Chile—and glimpse the 7th Continent from the air on our 9-day **Antarctic Express: Fly South, Sail North**. Then board your waiting ship to explore Antarctica and sail back across the Drake to Ushuaia. Flying one way and sailing the other gives you the best of both worlds. Expect unique wildlife sightings, rugged landscapes, penguins and seals—and the unforgettable excitement of standing on the Antarctic Continent for the first time.

- Explore Antarctica with the most polar-obsessed team in the industry
- Enjoy the speed and convenience of flying to Antarctica
- Embrace an exciting northbound ship crossing of the Drake Passage
- Spot incredible wildlife icebergs and more
- Learn about wildlife, history, glaciology and geology from our onboard polar experts
- Experience both Argentina and Chile as part of your journey to the 7th Continent

# Day by Day Itinerary



## Day 1

### Arrival in Punta Arenas, Chile

Your adventure begins in Punta Arenas, Chile, the most populated city in southern Patagonia. If you arrive early, there are many museums, restaurants and shops to enjoy. By early afternoon, a Quark Expeditions representative will meet you at the official starting point hotel, where you'll enjoy a welcome dinner and be briefed about preparations for embarkation day.

## Day 2

### Fly To King George Island and Embark

Your charter flight from Punta Arenas to Antarctica will enable you to cross the legendary Drake Passage in only two hours. Down below, your ship awaits your arrival at King George Island. Your first glimpse of dramatic Antarctic landscapes will be from a unique perspective, as your plane descends onto the South Shetland Islands. After landing, make your way to the shore, before the Zodiac transfer to your ship to set sail for the Antarctic Peninsula.

## Days 3–6

### Antarctic Peninsula and South Shetland Islands

The most common reaction upon reaching the 7th Continent is a sense of reverence and awe. The experience is beyond words, since few places are as untouched as Antarctica. You will begin to appreciate why this region has long captivated the attention of explorers and travelers alike. Every time we visit Antarctica, we witness something new or unexpected, which means that your expedition will be unlike any other—creating a unique, personal experience.

Each day, you will take Zodiac excursions from the ship to explore glaciated bays, channels and landing sites. Your Expedition Team will take care of you at each landing, whether you are hiking the Antarctic landscape, visiting a research station or observing chinstrap, Adélie and gentoo penguins, all of which can be found here. Keep an eye out for Weddell, fur, crabeater and leopard seals as well as curious whales, such as humpbacks, minkes, or perhaps orcas while on a Zodiac cruise. Each excursion will present a new array of creatures to fascinate you and keep your camera busy.

Amid the serene silence of Antarctica, noisy interludes become indelible memories, such as penguins squabbling over prized pebbles, or the boom and crack of a calving glacier.

Every day will be different, having been carefully crafted by your Expedition Team to inspire and educate you about this wonderful part of the world.

---

## Days 7 and 8

### Crossing the Drake Passage

A rite of passage for any Antarctic adventurer, crossing the Drake signals the end of your journey. No matter the sea conditions, you will benefit from having developed your sea legs over the course of the previous four days. While the journey home has begun, your wildlife spotting continues. Your Expedition Team will be available on deck and on the ship's bridge to help you spot the majestic wandering albatross and a number of whale species, such as minke and humpback.

When you're not looking at photos and reminiscing about the previous days, the Expedition Team will conclude their series of engaging presentations on subjects such as marine biology, polar history and glaciology.

---

## Days 9

### Disembark Ushuaia, Argentina

You will arrive in Ushuaia in the morning, after which you can continue your onward journey, or catch your homeward-bound flight.

# Arrival & Departure Details



\* Arrive at the hotel on Day 1 by 3pm or earlier. Day 1 includes a mandatory briefing.  
✈️ International flights are not included in the cost of the voyage.

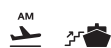


## Day 1 Arriving in Punta Arenas and Hotel Night

- Make your own way from the airport to the hotel if you arrive in Punta Arenas before Day 1
- If you arrive on Day 1, an airport-to-hotel transfer is provided
- Weigh and tag your luggage in the presentation room
- Don't forget the mandatory briefing at 6 p.m. followed by a welcome dinner

We ask all guests to be at the hotel in Punta Arenas by 3 p.m. latest. If you are arriving in Punta Arenas on Day 1, we recommend booking a flight or bus that arrives by 1 p.m. to give yourself plenty of time. For those arriving by air on Day 1, you will be greeted at the airport and transferred to the included group hotel. For passengers arriving before Day 1 of the itinerary, taxis are available to take you from the airport. On arrival at your hotel, either check in, and make your way to the Quark Expeditions meeting room, or if you have arrived before check-in begins at 3 p.m., you can head directly to the meeting room, which is open from 12 p.m. Here you will collect your boots and parka, which you will need for the following day's flight. You will also need to bring the luggage you are planning to travel with to the meeting room, to have it weighed and checked for biosecurity clearance, which may involve vacuuming out any debris from outer clothing and backpacks, part of our commitment to protecting the sensitive Antarctic environment.

After these procedures, the mandatory briefing will start at 6 p.m. in the meeting room. A welcome dinner hosted by a Quark Expeditions representative will follow the briefing.



## Day 2 Flight to King George Island and Embarkation

- Your flight to Antarctica is scheduled after breakfast

Your flight to Antarctica is expected to depart from Punta Arenas for King George Island on Day 2 of your itinerary, after breakfast. Although the flight is scheduled to depart first thing in the morning, there is significant variability based on weather conditions. You should be prepared to depart the hotel for the airport on our group transfer at any time.



## Final Day

- Ship arrives at the pier in Ushuaia between 7 a.m. and 8 a.m.
- Disembark after breakfast

### Disembarkation in Ushuaia and onward

Your ship is scheduled to arrive at the pier in Ushuaia, usually between 7 a.m. and 8 a.m. Once the ship has docked, you will bid farewell to your Expedition Team and shipmates before completing your disembarkation. The process takes about an hour. Weather conditions can always impact our arrival times, and airline schedule changes have also been known to occur in Argentina. Please book your onward flight from Ushuaia to depart as late in the day as possible or at a date after the end of your expedition. If you have booked a flight that departs before 11 a.m. on the date that your expedition ends, you will be at risk of missing your flight. Quark Expeditions staff in Ushuaia will reconfirm your domestic flight 48 hours prior to disembarkation, provided you give your information to our team ahead of time.

## Antarctic Express: Fly South, Sail North

### Punta Arenas and Ushuaia Airport Transfers

- Included group transfer from Punta Arenas airport to the hotel on Day 1
- Included group transfer from the ship to the airport on disembarkation day
- If you're not using the included transfer, please arrange your own airport transportation

#### ARRIVAL

Upon your arrival in Punta Arenas, a group transfer is included from the airport to your included pre-expedition hotel on Day 1 of your itinerary. Group transfers are also included in conjunction with the charter flights to and from Antarctica.

#### DEPARTURE

A group departure transfer is included from the ship to the airport on the final day of your itinerary. If your flight is later in the day, you may opt to transfer to our luggage storage facility instead and enjoy further activities in Ushuaia on your own. Access to luggage storage is available until 6 p.m. on the disembarkation day only. You will need to arrange your own transfer to the airport if you do not take advantage of the included transfer or if you are leaving Ushuaia after the disembarkation day.

In order to facilitate your transfers, we request that you provide your flight details to Quark Expeditions at least 30 days prior to traveling.

### Luggage Restrictions

- Travel with one checked bag and one carry-on only

#### Charter Flight Luggage Limit

This expedition includes charter flights. Your package includes one checked bag and one carry-on bag. Luggage weight restrictions on these flights are typically lower than those on international carriers. There is no option to pay for additional luggage. Specific weight limits will be confirmed in your final travel documents.



Photos captured with a telephoto lens from a responsible distance, following regulatory IAATO guidelines.



# Book Your Next Adventure

Contact your travel professional or a Quark Expeditions Polar Travel Advisor.

**Toll free and local numbers:**

**North America**  
(Toll Free) 1 888 332 0008

**U.K.**  
Tel +44 203 514 2712  
(Toll Free) 0 808 120 2333

**Australia**  
Tel +61 2 72580333  
(Toll Free) +61 1800 953518

**France**  
Tel +33-1 80 14 01 05  
(Toll Free) 08 05 08 66 46

**Photo Credits:** Acacia Johnson; David Merron; Nicky Souness; Samantha Crimmin; Sam Edmonds; Michelle Sole; Cindy Miller Hopkins; Gajan Balan; Jonas Fellenstein; Brad Flowerdew; Nicolas Singh; Adobe Stock.

Updated May 14, 2026

P O L A R

O B S E S S E D

S I N C E

1 9 9 1



Quark  
Expeditions®