

Antarctic Express Crossing the Circle

Onboard World Voyager



Expedition Overview



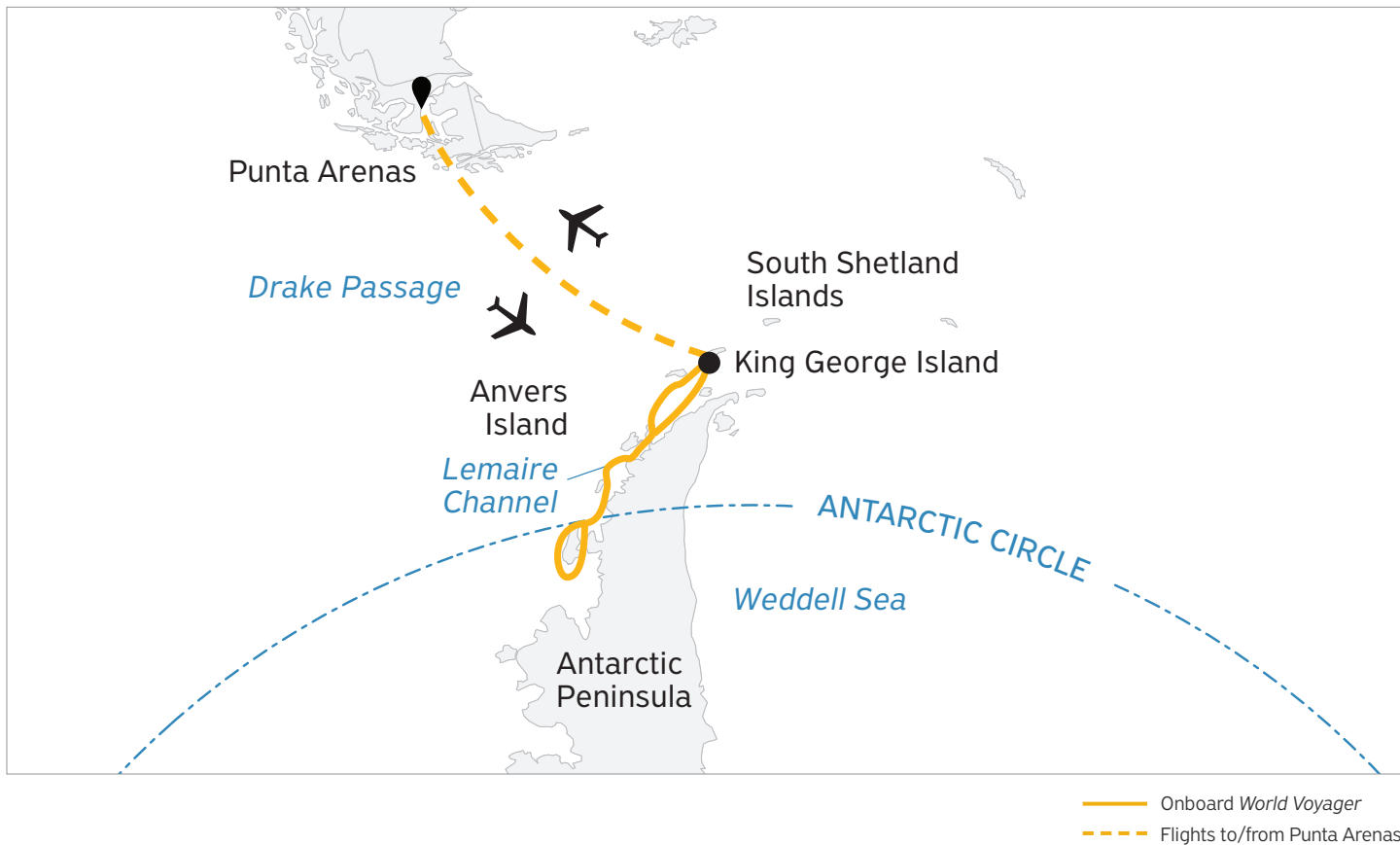
The Fastest Route Across the Antarctic Circle

Fulfill one of the biggest milestones in polar travel on our 11-day **Antarctic Express: Crossing the Circle** itinerary. By flying both ways over the notorious Drake Passage, you do in four hours what would otherwise take four days—arriving directly at King George Island, Antarctica, where your expedition begins among ice, wildlife and the vast silence of the 7th Continent.

Explore the Antarctic Peninsula by ship, Zodiac, kayak and on foot, then continue south beyond the Antarctic Circle at 66°33'—a latitude few ever reach. In just 11 days, you will experience the rare privilege of crossing the Circle—and the profound sense of how far you've truly ventured.

- Fly over the Drake Passage and experience the fastest, most direct way to Antarctica
- Become one of the few travelers to cross the Antarctic Circle
- Witness iconic Antarctic wildlife, such as penguins, seals and whales
- Enjoy presentations on wildlife, history, glaciology and geology by our onboard polar experts

Day by Day Itinerary



Day 1

Arrive in Punta Arenas, Chile

Your adventure begins in Punta Arenas, Chile, the most populated city in southern Patagonia. If you arrive early, there are many museums, restaurants and shops to enjoy. By early afternoon, a Quark Expeditions representative will meet you at the official starting point hotel, where you'll enjoy a welcome dinner and be briefed about preparations for your embarkation day.

Day 2

Fly to King George Island and Embark

Your charter flight from Punta Arenas to Antarctica will enable you to cross the legendary Drake Passage in only two hours, while far below, the ship will approach King George Island for your arrival. Your first glimpse of dramatic Antarctic landscapes will be from a unique perspective, as your plane descends onto the South Shetland Islands. After landing, make your way to the shore, before being transferred by Zodiac to your ship to set sail for the Antarctic Peninsula.

Antarctic Express Crossing the Circle

Days 3-5

Antarctic Peninsula and South Shetland Islands

There are few places in the world as evocative as Antarctica. The Antarctic Continent is indescribable and can only be fully appreciated through your own eyes.

Even more exciting are your land excursions. Your first Zodiac landing is something you'll never forget. Setting foot on a beach inhabited by thousands of penguins is the most intimate way to experience the unique wildlife of Antarctica.

Each landing is different and dependent on weather, but every day presents new sightings and photo opportunities, and it won't be long before you can tell the difference between an Adélie, gentoo and chinstrap penguin.

Days 6 & 7

Crossing the Circle

Crossing the Antarctic Circle is both a memorable experience and impressive achievement, as few travelers reach so far south. If conditions allow us to cross this famed latitude of 66°33' South, we'll toast the first explorers who ventured here, and you can raise a glass and take pride in knowing you've made it to a part of the world visited by very few people. This is raw Antarctica, home of the midnight sun, Weddell seals, and your best chances of encountering sea ice—the foundation of the Antarctic marine ecosystem.

Days 8 & 9

Northbound Along the Peninsula

If you haven't had your fill of Antarctic wildlife and icebergs by now, you'll surely be satisfied by the time you return to King George Island. You will continue to explore by Zodiac or on land as you travel north along the western Antarctic Peninsula.

Your Expedition Team will always be on the lookout for species of seabirds, seals and whales that may have eluded you on your journey south.

Day 10

Disembark and Fly to Punta Arenas

After your week of exploration, you'll say goodbye to your Expedition Team and disembark at King George Island. Your two-hour flight across the Drake Passage to Punta Arenas, Chile, brings your adventure to an end. After your group transfer to the hotel, you are free to explore and enjoy an evening on your own in the city or at the hotel to reminisce about the sights and sounds of Antarctica.

Day 11

Depart Punta Arenas

After breakfast, you are welcome to continue on your own travels or make your way to the Punta Arenas airport for your homeward flight.

Arrival and Departure Details



* Arrive at the hotel on Day 1 by 3pm or earlier. Day 1 includes a mandatory briefing.

🛫 International flights are not included in the cost of the voyage.

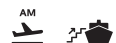


Day 1 Arriving in Punta Arenas and Hotel Night

- Explore the museums, restaurants and galleries of Punta Arenas
- Welcome dinner and briefing at the hotel

We ask all guests to be at the hotel in Punta Arenas by 3 p.m. latest. If you are arriving in Punta Arenas on Day 1, we recommend booking a flight or bus that arrives by 1 p.m. to give yourself plenty of time. For those arriving by air on Day 1, you will be greeted at the airport and transferred to the included group hotel. For passengers arriving before Day 1 of the itinerary, taxis are available to take you from the airport to your hotel.

On arrival at your included hotel, either check in, and then make your way to the Quark Expeditions meeting room, or if you have arrived before check-in begins at 3 p.m., you can head directly to the meeting room, which is open from 12 p.m. Here you will collect your boots and parka, which you will need for the following day's flight. You will also need to bring the luggage you are planning to travel with to the meeting room to have it weighed and checked for biosecurity clearance, which may involve vacuuming out any debris from outer clothing and backpacks, part of our commitment to protecting the sensitive Antarctic environment. After these procedures, the mandatory briefing will start at 6 p.m. in the meeting room. A welcome dinner hosted by a Quark Expeditions representative will follow the briefing.



Day 2 Flight to King George Island and Embarkation

- Cross the Drake Passage in two hours
- Enjoy the aerial views of Antarctica as your plane descends at King George Island

Your flight to Antarctica is expected to depart from Punta Arenas for King George Island on Day 2 of your itinerary, after breakfast. Although the flight is scheduled to depart first thing in the morning, there is significant variability based on weather conditions. You should be prepared to depart the hotel for the airport on our group transfer at any time.



Disembarkation Day

- Disembark late morning
- Board your flight to Punta Arenas
- Enjoy your hotel night in Punta Arenas

Disembarkation at King George Island

Ship disembarkation will generally occur in the late morning, on King George Island. You will be greeted at the beach by transfer buses that will take you to heated comfortable pre-boarding lounges before boarding your flight. Your luggage will be transferred from the ship to the plane. After a two-hour flight, you will land at the Punta Arenas airport (PUQ).

On arrival in Punta Arenas, you will be transferred from the airport to your post-expedition hotel for one final night.

Antarctic Express Crossing the Circle



Final Day

- Transfer independently to the airport or continue exploring locally

After breakfast at your hotel (which is included), make your way independently to the airport or continue your travel plans as prearranged.

Airport Transfer

ARRIVAL: Upon your arrival in Punta Arenas, a group transfer is included from the airport to your included pre-expedition hotel on Day 1 of your itinerary. Group transfers are also included in conjunction with the charter flights to and from Antarctica.
DEPARTURE: A departure transfer in Punta Arenas is not included.

In order to facilitate your transfers, we request that you provide your flight details to Quark Expeditions at least 30 days prior to traveling.

Luggage Restrictions

- Travel with one checked bag and one carry-on only.

Charter Flight Luggage Limit

This expedition includes charter flights. Your package includes one checked bag and one carry-on bag. Luggage weight restrictions on these flights are typically lower than those on international carriers. There is no option to pay for additional luggage. Specific weight limits will be confirmed in your final travel documents.



Photos captured with a telephoto lens from a responsible distance, following regulatory IAATO guidelines.



Book Your Next Adventure

Contact your travel professional or a Quark Expeditions Polar Travel Advisor.

Toll free and local numbers:

North America
(Toll Free) 1 888 332 0008

U.K.
Tel +44 203 514 2712
(Toll Free) 0 808 120 2333

Australia
Tel +61 2 72580333
(Toll Free) +61 1800 953518

France
Tel +33-1 80 14 01 05
(Toll Free) 08 05 08 66 46

Photo Credits: Acacia Johnson; David Merron; Nicky Souness; Samantha Crimmin; Sam Edmonds; Michelle Sole; Cindy Miller Hopkins; Gajan Balan; Jonas Fellenstein; Brad Flowerdew; Nicolas Singh; Adobe Stock.

Updated May 14, 2026

P O L A R

O B S E S S E D

S I N C E

1 9 9 1

 Quark
Expeditions®