

Antarctic Explorer

Discovering the 7th Continent

Onboard Ultramarine (with flights from Buenos Aires)



Expedition Overview

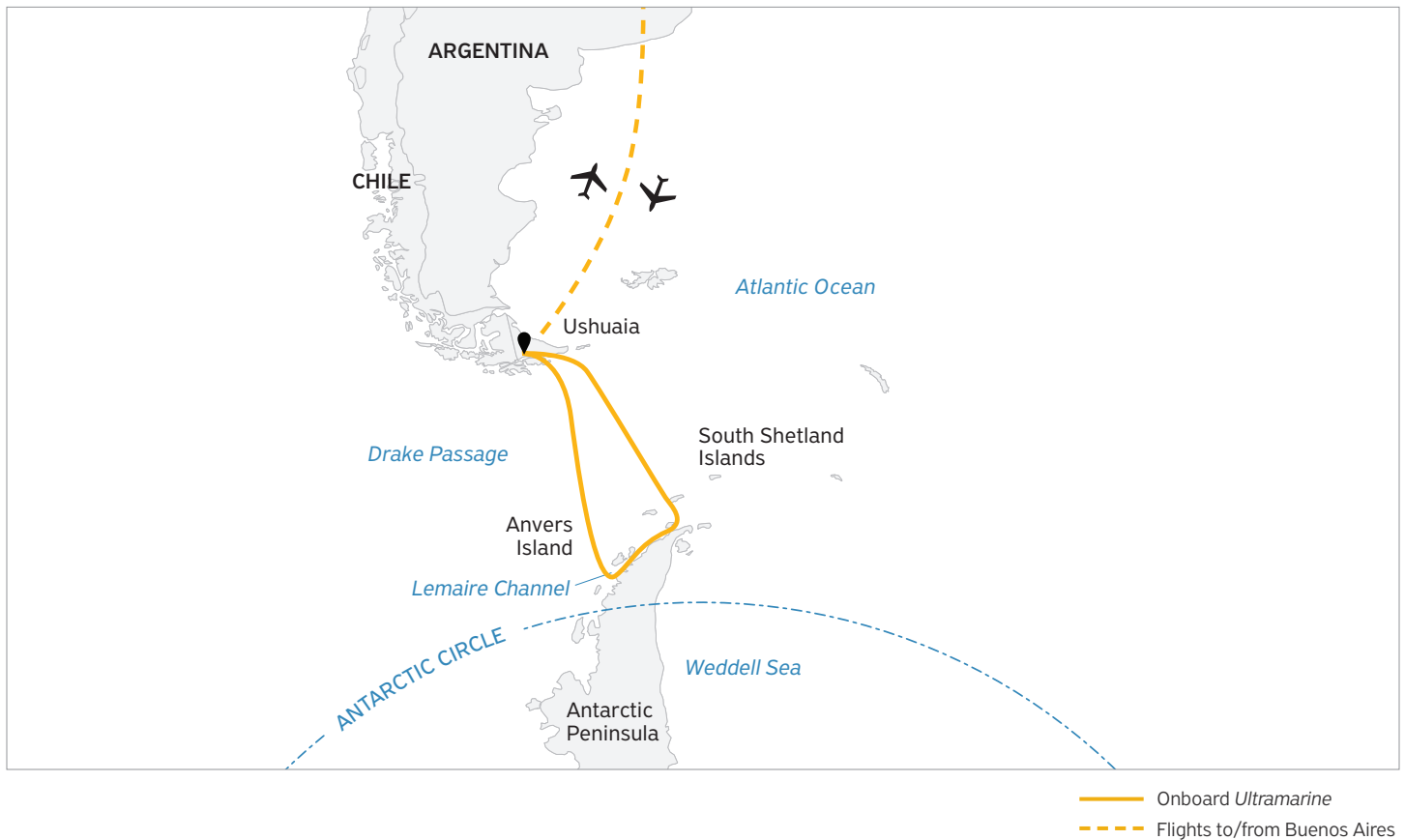


The Classic Antarctic Experience

Our popular 12-day **Antarctic Explorer: Discovering the 7th Continent** itinerary delivers the very best of the Antarctic Peninsula in one unforgettable journey: enjoy one heli-flightseeing excursion (included in the cost of your trip); cross the legendary 800-kilometer Drake Passage; explore majestic polar landscapes by Zodiac, kayak, or on foot; photograph penguins, whales, and seals framed by towering ice; and deepen your experience with expert presentations on history, biology, and glaciology.

- Set foot on the magical 7th Continent
- Enjoy one heli-flightseeing excursion— included in the trip
- Travel safely and comfortably aboard our ice-strengthened vessel
- Enjoy presentations on wildlife, history, glaciology and geology by our onboard polar experts
- Spot penguins, seals and whales and other wildlife
- Immerse yourself in icy Antarctica with an optional paddling excursion.

Day by Day Itinerary



Day 1

Arrive in Buenos Aires, Argentina

Upon arriving in this splendid city, known for its vibrant Argentinian culture, European architecture and cosmopolitan vibe, you will independently transfer to the designated group hotel, which is included in your Charter Flight & Hotel package.

Day 2

Fly to Ushuaia and Embark

After an early breakfast at the hotel, the group will transfer to the airport and board our private charter flight to Ushuaia, Argentina. Upon arrival, you will be transferred from the airport to a central downtown location to explore this quaint port town on your own before making your way to the designated meeting spot. After a late afternoon embarkation, you will sail along the historic Beagle Channel, which transects the Tierra del Fuego archipelago in the extreme south of South America. Excitement builds in anticipation of your next stop: Antarctica.

Antarctic Explorer Discovering the 7th Continent (with flights from Buenos Aires)

Days 3 & 4

Crossing the Drake Passage

The unpredictable and exciting Drake Passage is an adventure unto itself. While being well taken care of by our expert onboard staff and leaders, you'll have plenty of time to gaze out at the ocean, take pictures of seabirds swooping around the ship, and get to know your Expedition Team and fellow travelers.

Days 5–9

South Shetland Islands and Antarctic Peninsula

The most common reaction upon reaching the 7th Continent is a sense of reverence and awe. The experience is beyond words, since few places are as untouched as Antarctica. You will begin to appreciate why this region has long captivated the attention of explorers and travelers alike. Every time we visit Antarctica, we witness something new or unexpected, which means that your expedition will be unlike any other—creating a unique, personal experience.

Each day, you will take Zodiac excursions from the ship to explore glaciated bays, channels and landing sites. Your Expedition Team will take care of you at each landing, whether you are hiking the Antarctic landscape, visiting a research station or observing chinstrap, Adélie and gentoo penguins, all of which can be found here. Keep an eye out for Weddell, fur, crabeater and leopard seals as well as curious whales, such as humpbacks, minke, or perhaps orcas while on a Zodiac cruise. Each excursion will present a new array of creatures to fascinate you and keep your camera busy.

Amid the serene silence of Antarctica, noisy interludes become indelible memories, such as penguins squabbling over prized pebbles, or the boom and crack of a calving glacier.

Every day will be different, having been carefully crafted by your Expedition Team to inspire and educate you about this wonderful part of the world.

Days 10 and 11

Return Crossing of the Drake Passage

The journey back across the Drake Passage provides a final opportunity to enjoy the invigorating Southern Ocean air. Spend time on the deck watching for seabirds and scouting for whales, enjoy presentations by your Expedition Team, and celebrate the experiences you've shared exploring the remarkable world of Antarctica.

Day 12

Disembark in Ushuaia and Fly to Buenos Aires

You will arrive in Ushuaia in the morning and disembark after breakfast, then make your way to your group charter flight to Buenos Aires.

Arrival & Departure Details



* Arrive anytime on Day 1 or earlier. Day 1 includes an optional briefing.
** Consider booking your international flight home after the Final Day as charter flight times may vary.
✈ International flights are not included in the cost of the voyage.

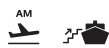


Arrival Day and Embarkation

Day 1 Arriving in Buenos Aires and Hotel Night

- Make your own way from the airport to the designated hotel
- Weigh and tag your luggage in the presentation room

Upon arrival in Buenos Aires, you will make your way to the designated group hotel, which is included in your Charter Flight & Hotel Package. A presentation room will be open from 12 p.m. to 8 p.m. for luggage weighing and tagging. A Quark Expeditions representative will be available to answer your questions and provide information about the next day's flight and ship embarkation.



Day 2 Ushuaia and Embarkation

- After breakfast on Day 2, transfer with the group to the airport
- Board your charter flight to Ushuaia
- Enjoy free time to explore Ushuaia
- Around 4 p.m., transfer with the group to the ship

After an early breakfast, your group will transfer to the airport and board our private charter flight to Ushuaia, Argentina. In Ushuaia, your Charter Flight & Hotel Package will allow for some free time to explore this quaint port town. We will transfer the group to the ship for embarkation around 4 p.m.



Final Day

- Ship arrives at the pier in Ushuaia between 7 a.m. and 8 a.m.
- Disembark after breakfast
- If flying home from EZE, we recommend booking flights departing after 9 p.m.
- If flying from Aeroparque/Jorge Newbery Airport (AEP), we recommend booking flights departing after 10 p.m.

Disembarkation in Ushuaia

The ship is scheduled to arrive back at the pier in Ushuaia between 7 a.m. and 8 a.m. After breakfast you will bid farewell to your Expedition Team before completing your disembarkation. This process takes approximately one hour.

Departing from Buenos Aires

Upon arrival in Buenos Aires, you may be able to connect directly with your homeward flight. Our charter flight lands at Buenos Aires international airport (Ministro Pistarini International — EZE). The included flight lands at approximately 5 p.m. We recommend you only select flights departing after 9 p.m. Check your itinerary carefully before booking. Some South America-bound flights originate at Jorge Newbery Airport (IATA code: AEP), which is also known as Aeroparque (IATA airport code: AEP). Due to unpredictable traffic in Buenos Aires, we recommend you only select flights departing Jorge Newbery Airport after 10 p.m.

Antarctic Explorer Discovering the 7th Continent (with flights from Buenos Aires)

Final Day

For the absolute safest travel plans, we recommend that you book an extra hotel night in Buenos Aires between flights. Expedition travel is occasionally unpredictable. We also strongly recommend booking flexible international air tickets. Quark Expeditions is not responsible for any air ticket change costs you may incur.

Airport Transfers

Arrival transfers from your international flights in Buenos Aires are not included.

Luggage Restrictions

- Travel with one checked bag and one carry-on bag

Charter Flight Luggage Limit

This expedition includes charter flights. Your package includes one checked bag and one carry-on bag. Luggage weight restrictions on these flights are typically lower than those on international carriers. There is no option to pay for additional luggage. Specific weight limits will be confirmed in your final travel documents.



Photos captured with a telephoto lens from a responsible distance, following regulatory IAATO guidelines.



Book Your Next Adventure

Contact your travel professional or a Quark Expeditions Polar Travel Advisor.

Toll free and local numbers:

North America
(Toll Free) 1 888 332 0008

U.K.
Tel +44 203 514 2712
(Toll Free) 0 808 120 2333

Australia
Tel +61 2 72580333
(Toll Free) +61 1800 953518

France
Tel +33-1 80 14 01 05
(Toll Free) 08 05 08 66 46

Photo Credits: Acacia Johnson; David Merron; Nicky Souness; Samantha Crimmin; Sam Edmonds; Michelle Sole; Cindy Miller Hopkins; Gajan Balan; Jonas Fellenstein; Brad Flowerdew; Nicolas Singh; Adobe Stock.

Updated May 14, 2026

P O L A R

O B S E S S E D

S I N C E

1 9 9 1



Quark
Expeditions®