

Arctic 2027

South Greenland: Alpine Exploration by Helicopter

Onboard *Ultramarine*



Contents

- 1 Expedition Overview
- 2 The Best of the Arctic
- 4 Itinerary
- 7 Science and Discovery
- 8 Local Partnerships
- 9 Arrival and Departure Details,
and International Flight Planning
- 11 Your Ship
- 12 Included Activities
- 14 Adventure Options
- 15 Conservation and Community
- 16 Departure Dates
- 17 Inclusions and Exclusions
- 18 Your Expedition Team
- 19 Meals on Board
- 20 Possible Excursions
- 22 Packing Checklist



Expedition Overview

South Greenland: Alpine Exploration by Helicopter

Experience the rare thrill of landing on the massive Greenland ice sheet—an exclusive highlight of our 15-day *South Greenland: Alpine Exploration by Helicopter* itinerary. This activity-packed voyage is perfect for travelers who love spending time off-ship, hiking, cruising by Zodiac, visiting local communities, camping, kayaking icy waters, and soaring above fjords and mountaintops in one of our twin-engine helicopters. Suited to guests of all fitness levels, you can choose how adventurous you want to be or enjoy a slower pace on board—relaxing in the spa and gym, unwinding in spacious common areas, or indulging in our Tundra to Table culinary experience.

Highlights



Soar over the massive Greenland Ice Sheet



Choose from unique off-ship excursions, such as helicopter landings, and camping alongside Tasermiut Fjord



Experience Greenlandic cultural highlights with local partners



Visit the Kujataa UNESCO World Heritage site to learn about the intersection of Inuit and Viking cultures.



Photo Credit: Macs Pihl - Visit Greenland

Itinerary

DAY 1 | ARRIVE IN REYKJAVIK

Arrive in Reykjavik and transfer independently to your hotel, which is included in the Charter Flight & Hotel Package. Depending on your arrival time, you may wish to explore sites of the fascinating capital, which is known for its mix of modern architecture and Viking heritage. At 64°08' north, Reykjavik is the world's northernmost capital of an independent sovereign state.

DAY 2 | EMBARKATION IN REYKJAVIK

This afternoon, you'll board your vessel and begin your expedition. Get ready for a great adventure ahead.

DAYS 3 & 4 | AT SEA

As we cruise north across Denmark Strait, with views of Greenland in the distance, your Expedition Team will prepare you for the adventures ahead. Our polar presentations are an excellent way to learn about the storied history of the Arctic, its fascinating wildlife, geology,

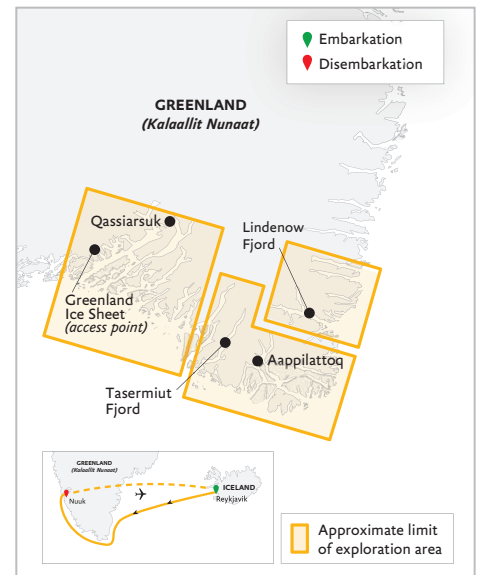
glaciology, ecology, and climate, and the incredible sights that await you.

The team will also help you search for seabirds soaring around your ship, as well as whales that frequent the surrounding waters.

DAYS 5 & 6 | THE WILD EAST

As we arrive in Greenland, towering fjords and hanging glaciers grab our attention, marking our first encounter with the remote east coast. This uninhabited region offers excellent opportunities for wildlife sightings, including humpback whales and the occasional polar bear. Depending on conditions, you may explore this ice-shaped landscape by sea, land, and air—through Zodiac cruising, hiking, paddling, and heli-landings.

Look forward to exploring the fjords of Greenland's east coast, including Lindenow Fjord (Kangerlussuaq). Thousands of years ago, Paleo-Inuit



**South Greenland:
Alpine Exploration by Helicopter**
Onboard the *Ultramarine* ———
Flight to/from Reykjavik - - - - -

hunters and fishermen lived in these isolated landscapes, sustained by the sea long before European explorers and mass settlements. Traces of their presence remain today, set against cascading glaciers and steep mountains.

The fjords are where you can observe plenty of wildlife, especially marine mammals. Rare sightings of polar bears are also possible as they drift down from the north on sea ice floes propelled by the East Greenland Current. Humpback whales are often sighted when entering fjords as the shallowing seas bring an upwelling of nutrients to the surface.

As we watch for wildlife, the alpine terrain invites exploration by sea, land, and air, offering a fully immersive experience of this remote icescape. Conditions permitting, activities may include heli-landings, hiking, paddling, Zodiac cruising, and shore landings.

DAYS 7-9 | ARCTIC PATAGONIA

We'll transit through the scenic 105-kilometer-long Prins Christian Sund (Ikerasassuaq), and explore the dramatic

fjords of South Greenland. Our team plans a visit to the village of Aappilattoq, where you can experience local culture, music, and traditional foods. The journey continues to Tasermiut Fjord—a 70-kilometer, cliff-lined waterway known as “Arctic Patagonia”—where overnight camping and excursions unfold among glaciers and towering peaks.

The maze of fjords, sounds, islets, inlets, and skerries around Cape Farewell (Nunap Isua), Greenland's southernmost tip, has a distinct character. Transiting Prins Christian Sund (Ikerasassuaq)—one of the world's most scenic fjords—is unforgettable. Expect dramatic mountain and seascapes, with glaciers tumbling to the sea and striking views at every turn. This region is home to Southern Greenlanders living on the frontier, where migrating hunting peoples from the east eventually settled near European trading posts.

The few villages in this southern region are known for communities that remain closely tied to hunting and fishing traditions. We hope to visit

Aappilattoq, a close-knit Greenlandic Inuit community on the shores of Prins Christian Sund, where you'll meet local partners and residents. Guests may have the opportunity to hear stories and music, sample traditional foods, learn about hunting practices, and perhaps even join a friendly game of soccer.

Your time in Arctic Patagonia will allow you to marvel at the impressive glacier at its head, with rivers of ice tumbling toward the sea, and the imposing peaks of Nalumasortoq and Ulamertorsuaq that dominate the skyline, making for the most scenic backdrops to your hike or helicopter excursion.

DAYS 10 - 12 | WESTLANDS & THE GREENLAND ICE SHEET

Following in the footsteps of the Greenlandic Norse into the western fjords, it's easy to see why Erik the Red chose this land and gave Greenland its name. In every direction, blue, ice-strewn waters meet lush valleys and blooming pastures. Warm microclimates deep within the fjords—rare across the Arctic—create surprisingly fertile landscapes. Farming



traditions dating back to Viking times continue today, with families tending remote sheep farms and producing seasonal crops along the shores.

This quiet, pastoral landscape is a sharp contrast to what comes next: the Greenland Ice Sheet.

With an average thickness of 1,673 meters (5,489 feet) and a maximum depth of over 3,488 meters (11,444 feet) at its thickest point, the Greenland Ice Sheet covers approximately 80% of the island. You will enjoy sweeping aerial views of the world's second-largest ice mass from your seat in one of our helicopters—and upon landing, experience something few others humans do: set foot on the Greenland Ice Sheet. Visitors often feel unprepared for the reality and scale of the Ice Sheet, where the absence of edges—as it stretches into the horizon—and the sheer physical presence of this ancient ice crackling underfoot transforms the abstract into something deeply tangible.

Tamassa, meaning “Come in everyone” or “You are welcome,” is a unique onboard cultural exchange—offered on the same day as the Ice Sheet Experience—led by South Greenlanders themselves. Moving naturally through shared spaces onboard *Ultramarine*, local Greenlanders connect with guests through conversation, stories, hands-on workshops, food tastings, and performances. Tamassa, in this instance, invites Greenlanders into our home, the ship.

You'll also explore Kujataa, a UNESCO World Heritage Site that preserves a remarkable legacy of Norse and Inuit farming. We also hope to visit Qassiarsuk, a small settlement across the water from Narsarsuaq, where you can experience true South Greenland hospitality and gain insight into life at the edge of the Ice Sheet. Take time to visit the remains and reconstructions of Brattahlíð, Erik the Red's estate and once the heart of the Norse Eastern Settlement.

DAYS 13 | AT SEA

We'll head north along the spectacular west coast of Greenland on our way to Nuuk. As your Arctic adventure winds down, you can take in a polar presentation by our onboard experts, share your photos, sip an icy cocktail in the bar, or watch a movie. This is a great opportunity to ask members of the Expedition Team any remaining questions you have about any aspect of your voyage.

DAY 14 | DISEMBARKATION, VISIT NUUK, FLIGHT TO REYKJAVIK

Upon arriving in Greenland's capital, enjoy one more Zodiac ride to shore for the group transfer to the airport to catch your charter flight to Reykjavik, Iceland. Upon arrival in Reykjavik, we will transfer you to your hotel. Both your hotel and charter flight are included in the Charter Flight & Hotel Package.

DAY 15 | DEPART REYKJAVIK

After breakfast at your included hotel, make your way to Keflavik International Airport for your onward flight, or continue exploring Reykjavik at your leisure.



EXPEDITION SPIRIT

Embracing the unexpected is part of the legacy—and excitement—of expedition travel. When traveling in extremely remote regions, your Expedition Team must consider the sea, ice, wildlife, and weather to guide the route and itinerary details. This itinerary is a tentative outline of what you'll experience on this voyage; please be aware that no specific itinerary can be guaranteed. By the same token, wildlife sightings as described are expected, but not guaranteed. Your Expedition Team will use their considerable experience to seek out wildlife in known habitats, but the presence of any particular species of bird or marine wildlife is not guaranteed.



Science & Discovery

A new initiative designed to foster community, curiosity and education.

Beginning in our Arctic 2027 season on select *Ultramarine* itineraries, Quark Expeditions is collaborating with leading scientists and researchers to enrich guest learning on- and off-ship.

Guest Engagement: Through researcher-led sessions, and interactive learning and field experiences with our expedition team, guests will gain a better understanding and appreciation of the polar wilderness.

This Science & Discovery program will enable guests to:

- **Interact and connect with scientists and researchers** who are actively collecting data during expeditions.
- **Participate in citizen science programming** to broaden their understanding and knowledge of the incredible polar ecosystem.
- **Work with our expedition team** to help collect and record data, ranging from experiences such as conducting seabird surveys on deck to documenting whale sightings on Zodiac excursions or joining interactive sampling activities to measure water conditions.

SCIENCE IN THE FIELD

Quark Expeditions supports academic research through partnerships with institutions such as Seabird Watch to deepen our understanding through access to projects that are contributing to published research and projects of high importance.

CITIZEN SCIENCE

In collaboration with the Polar Citizen Science Collective and Fjord Phyto, guests can engage in meaningful scientific data collection that supports targeted field research for projects like Happywhale.

QUARK SCIENCE HUB

This designated space on *Ultramarine* enables guests to share knowledge, information and insights with scientists, researchers, and our Expedition Guides.



Gather with scientists, researchers and expedition guides to share findings and insights from the voyage.



Engage with interactive digital displays featuring multimedia content for self-guided discovery even when staff aren't present.



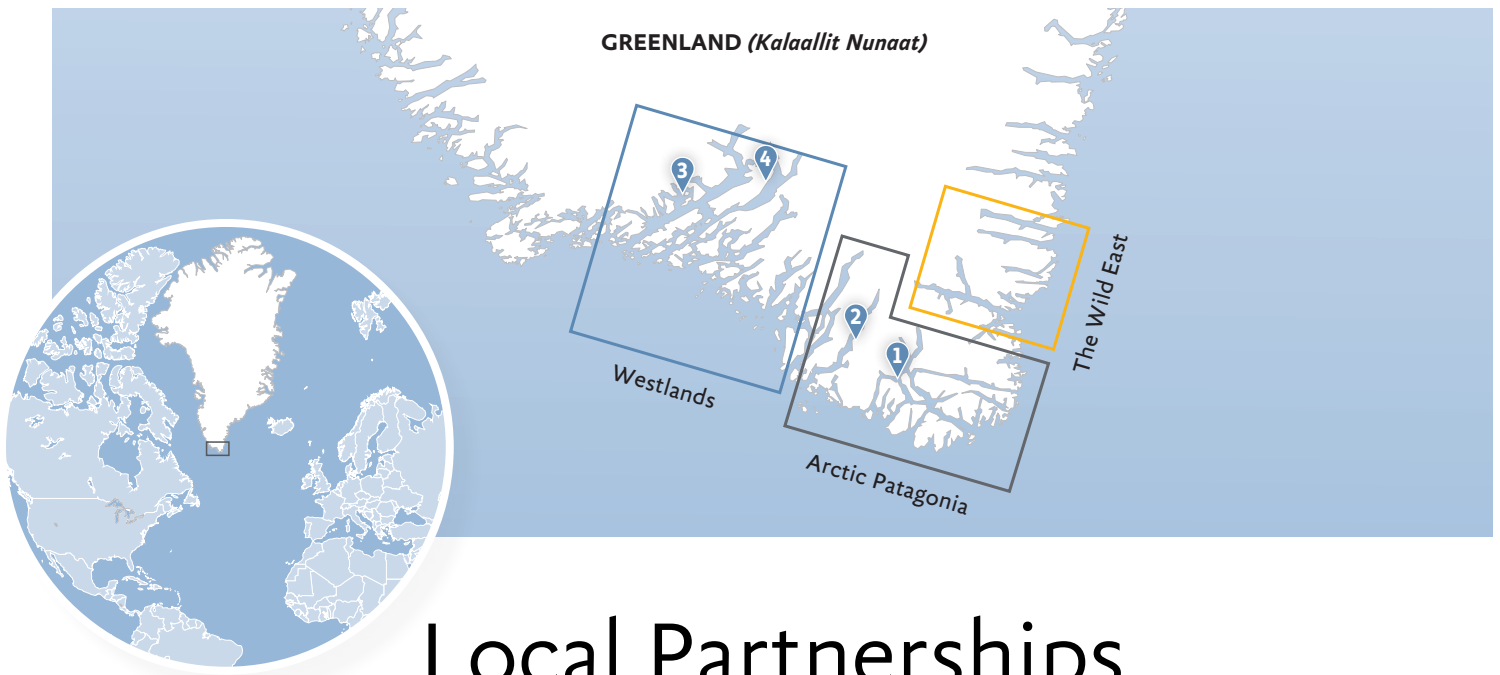
Learn how data collection methods, such as drones, wildlife tags, and biopsy and guano sampling, enable us to study the health, population, and migratory pathways of unique birds, whales, and seals.



Review and discuss observations and explore samples collected during science Zodiac cruises with other participants.

Note: The Science Hub is open to guests for self-guided exploration when staff are otherwise occupied.





The *South Greenland: Alpine Exploration by Helicopter* itinerary is the first of its kind to be designed in full collaboration with local partners. This program not only aligns with local tourism development strategies, but it has been endorsed by Kommune Kujalleq, the regional government of South Greenland.



1 | AAPPILATTOQ

Storytelling, food, music and friendly competition are some of the experiences you can expect during this visit to one of Greenland's smallest communities.



2 | TASERMIUT CAMP

Join your Greenlandic hosts for a taste of overnight life on the land in one of our most immersive local experiences.



3 | TAMASSA

Alongside our Ice Sheet excursions, we welcome a range of local artists, craftspeople, musicians, and chefs onboard for an immersive cultural festival, Tamassa.



4 | QASIARSUK

Learn about South Greenland's agricultural economy at this sheep farming community as part of our final day of excursions.



Arrival and Departure Details, and International Flight Planning

	DAY 1	DAY 2	EXPEDITION DAYS	DISEMBARKATION DAY	FINAL DAY
	International flight in* Arrival and hotel night	Embarkation	On ship or landing days	Disembarkation, charter flight and hotel night	Leave hotel International flight onward
<p>* Arrive anytime on Day 1 or earlier. Day 1 includes an optional briefing. International flights are not included in the cost of the voyage.</p>					

Arrival

DAY 1 — ARRIVAL AND HOTEL NIGHT IN REYKJAVIK

You may arrive in Reykjavik at any time during Day 1 of the itinerary and make your way to the included hotel.

DAY 2 — EMBARKATION IN REYKJAVIK

On the morning of Day 2, your luggage will be collected from the lobby of your hotel, transferred to the ship and stored in your cabin. Ship embarkation will occur on Day 2 of your itinerary, usually around 4 p.m. You and your shipmates will meet in the lobby of your hotel and board the waiting buses for transfer to the ship. Information about transfer timing will be posted in your Reykjavik Hotel Final Day and Departure document.

PLEASE NOTE

There is a strict luggage weight limit on checked luggage and cabin baggage on the flights between Reykjavik and Nuuk. There is no option to pay for additional luggage.

You will find in your final documents:

- › Luggage weight restrictions on charter flights.
- › Hotel information and check in time
- › Charter flight time to embarkation point
- › Embarkation plan
- › Departure charter flight time

Final Day and Departure

DISEMBARKATION IN NUUK

Your voyage is scheduled to end in Nuuk where you will disembark after breakfast. Disembarkation takes about an hour, after which you may have time to explore Nuuk. Otherwise, you will be transferred to the airport for the return charter flight to Reykjavik.

DEPARTING FROM REYKJAVIK

Upon arrival in Reykjavik, there will be a group transfer to your included post-expedition hotel. After breakfast the following morning, you may make your way to the airport to connect with your homeward flight, or stay longer if you have booked additional accommodation.

Arrival and Departure Transfers

REYKJAVIK AIRPORT TRANSFERS

Arrival and departure transfers in Reykjavik are not included; if you require a transfer, you will need to arrange your own transportation.





ULTRAMARINE

The technologically advanced *Ultramarine* is built to go beyond the familiar in polar travel and to immerse guests in the best the region has to offer.

Equipped with two twin-engine helicopters and 20 quick-launching Zodiacs, *Ultramarine* offers the industry's largest portfolio of off-ship adventures.

The vessel features the most spacious suites in its category, fine dining, breathtaking public spaces, exceptional wildlife-viewing areas, and sustainability systems that exceed industry standards. *Ultramarine* also features an onboard Science Hub, the centerpiece of our Science & Discovery program.

Wellness amenities include Tundra Spa with VOYA treatments, morning stretch classes, a sauna, a fully equipped fitness center, and health-conscious dining designed to restore balance and vitality at sea.

Ultramarine is designed to deliver unforgettable polar memories.

SHIP SPECIFICATIONS:

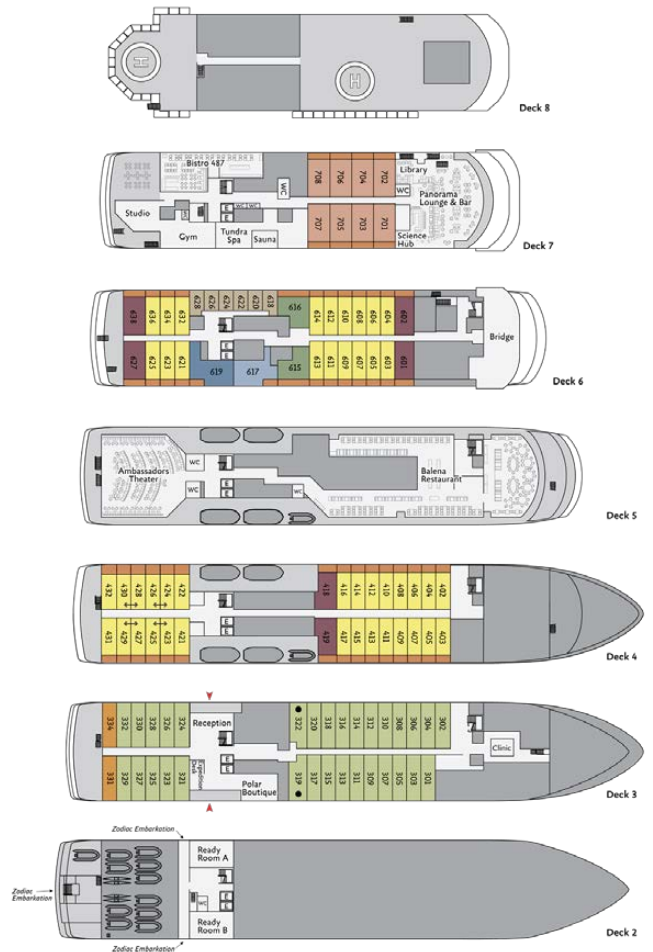
Staff and Crew: 140

Guests: 199

Lifeboats: 4, fully enclosed

Ice Class: PC6

Visit QuarkExpeditions.com to view deck plan details.



- Ultra Suite
- Deluxe Balcony Suite
- Solo Panorama
- Owner's Suite
- Balcony Suite
- Balcony
- Penthouse Suite
- Explorer Suite
- ↔ Interconnecting Suites
- Terrace Suite
- Explorer Triple
- Accessibility modified cabin; please speak to your travel professional for details



Included Activities

These off-ship excursions are included in the cost of this voyage.



FLIGHTSEEING

While polar landscapes are spectacular from the sea, they're even more stunning from the air, a view you can enjoy while seated in one of the two twin-engine helicopters stationed on *Ultramarine*. Typically in groups of fewer than 10, you will experience an unforgettable aerial tour of the Arctic during a 10- to 15-minute flightseeing excursion that's included in the cost of the voyage. Additional helicopter activities may also be available for purchase on board. Please note: all helicopter operations are weather- and logistics-dependent.

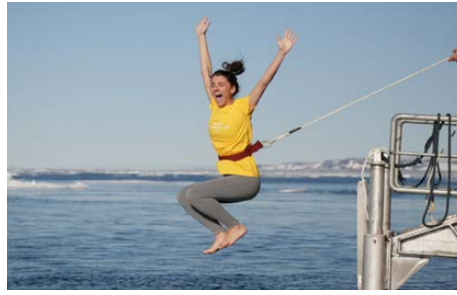
ICE SHEET EXPERIENCE

Explore beyond cascading coastal glaciers to access the icy realms of the second-largest ice mass in the world, the Greenland Ice Sheet. An excursion on one of *Ultramarine's* two twin-engine helicopters means you'll enjoy views of the Ice Sheet very few other humans get to experience. You'll learn about the dynamics of this environment from our team of glaciologists while you explore this vast, seldom-visited body of ice. This activity is offered over a two-day period to ensure every guest is able to experience this exclusive adventure option.



PHOTOGRAPHY

Documenting your voyage so you can take the memories home is a rewarding experience. Our photography guides will help you hone your skills to capture the beauty of the Polar Regions.



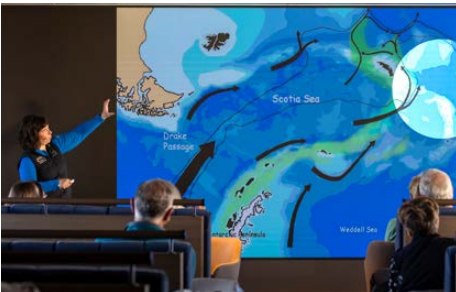
POLAR PLUNGE

This rite of passage, scheduled only once per expedition, gives you the chance to jump safely into the bracing Arctic waters under the watchful eye of our staff—and just about every single camera on board.



HIKING

Led by experienced staff, exploring on foot is one of the best ways to appreciate the polar landscapes. Our guides are able to accommodate a range of skill levels to suit every guest.



SCIENCE & DISCOVERY

Our Science & Discovery program offers guests the unique opportunity to engage directly with scientists and researchers and participate in citizen science activities with the expedition team to collect and record data. Activities include conducting seabird surveys on deck, documenting whale sightings, and participating in interactive water sampling activities to measure environmental conditions. This program provides travelers with rare, first-hand experiences that contribute to global scientific research and deepens their understanding of and appreciation for the polar environment.



COMMUNITY VISITS

Our Greenland Adventure voyages include the widest range of community experiences in the Quark Expeditions portfolio. During this voyage we hope to offer visits to two iconic South Greenlandic communities (Aappilattoq and Qasiarsuk) and provide opportunities for guests to share their journey and engage with our local partners. Learning about the wonders of Greenland from Greenlanders will be a highlight of this voyage.



ZODIAC CRUISING

Zodiacs are the workhorses of polar expeditions, taking you to places the ships can't access, allowing you to reach remote shorelines, explore shallow inlets and spot unique wildlife. Expedition staff make stepping in and out of them safe and comfortable, and your Zodiac drivers will provide active interpretation, making the landscape come even more alive.

Contact your Polar Travel Advisor or your Travel Professional for more information about your Included Activities and Adventure Options, including required experience, physical requirements and cost.



Adventure Options

These additional activities, which cost extra, fill up quickly and should be booked in advance.



GREENLAND CAMP EXPERIENCE

Join local hosts at Tasermiut Camp, one of the most exclusive camps in Greenland. Our local guides will lead you through the wonders of their homeland. Spend ample time, in intimate groups, walking through the beautiful landscapes and pristine valleys, roam the tundra with a local chef who will show you fresh ingredients and then prepare an incredible meal together. Overnight at the camp and, if conditions are right, experience the magnificent colours of the polar twilight which will bring the beautiful mountainous surroundings into full effect. Depending on conditions, this is also an excellent venue to enjoy the Northern Lights.



TUNDRA TO TABLE

Our ground-breaking Tundra to Table experience, hosted by Inuit chefs who are experts in Indigenous cuisine, is a one-of-a-kind adventure into the culinary traditions of the Inuit in Greenland and

Nunavut. Guests will enjoy dishes from these Arctic regions while learning about local Inuit culture and history. At the heart of this experience, enjoyed in *Ultramarine's* main restaurant, Balena, is the purity of the ingredients. While the menu varies from trip to trip, Inuit fusion dishes may include beer-braised muskox, South Greenlandic lamb, and pickled halibut served with lumpfish dip and bread. Chefs will also engage in storytelling throughout the meal. Limited seating. Book early.

✕ PADDLE EXCURSION

Join us for a one-time paddle on our stable sit-on-top kayaks—perfect for anyone with minimal or no kayaking experience. Small groups of passengers will be taken out on calm days, with our expert guides always present to provide instruction and help you connect with the polar sea.

Included with limited availability.



PLEASE NOTE

For all paid activities, pre-booking is required. We recommend booking early as spaces fill quickly.



Our Commitment to Conservation & Community

We're proud to partner with local communities to create immersive guest experiences that build respect for wildlife, culture and the land, and to work with leading scientists to support the conservation of the Arctic regions.

Empowering Local Development

We champion Arctic communities' goals for economic development and sustainable tourism through local hiring, infrastructure support, and advance visit planning.

Investing Directly in Communities

With guest support, we help fund community-led projects—from food banks to cultural and language-based programs.

Co-creating with Community Partners

By partnering with local groups, we create authentic experiences—such as Tundra to Table, developed with [Igapall](#), which enables Inuit chefs to share Greenlandic cuisine and culture. This program is available on most *Ultramarine* itineraries that operate in Greenland and the Canadian High Arctic.

To also learn about our conservation efforts, and how we connect guests to the natural world through hands-on experiences and education, visit us online at [Community & Conservation](#).



Community

We deliver authentic experiences for our guests that benefit local partners and the communities we visit.



Departure Dates

South Greenland: Alpine Exploration by Helicopter

ULTRAMARINE

<i>Dates</i>	<i>Days</i>	<i>Start / End</i>	 Ice Sheet Experience	 Zodiac Cruising	 Polar Plunge	 Flightseeing	 Greenland Camp Experience	 Tundra to Table	 Paddle Excursion
ARCTIC 2027									
AUG 4 - 18, 2027	14	Reykjavik	Included	Included	Included	Included	\$	\$	\$

\$ Paid Activities



Inclusions and Exclusions

Inclusions

RATES INCLUDE:

- Two helicopter excursions: Flightseeing and Ice Sheet Experience
- One 10-15 minute heli flightseeing excursion
- One helicopter-supported Greenland Ice Sheet Experience
- An official Quark Expeditions® parka to keep
- Leadership throughout your voyage by our experienced Expedition Leaders, including shore landings and other activities
- All Zodiac transfers and cruising as per the daily program
- All shore landings as per the daily program
- Shipboard accommodation with daily housekeeping
- All meals, snacks, soft drinks and juices on board throughout your voyage. Please inform us of any dietary requirements as far in advance as possible.)
- Complimentary select beer, wines and cocktails during bar service hours and dinner

- Complimentary coffee, tea and cocoa available around the clock
- Formal and informal presentations by our Expedition Team and guest speakers as scheduled
- A photographic journal documenting the expedition
- A pair of waterproof expedition boots on loan for landings and Zodiac cruising excursions
- Hair dryer and bathrobes in every cabin
- Complimentary Wi-Fi service on one device permitting basic Internet browsing, email, posting on social media and voice applications. (Premium packages are available for more data-intensive applications.) Note: Internet access in the polar regions is subject to geography, climate, and other factors beyond our control.
- All miscellaneous service taxes and port charges throughout the program
- All luggage handling aboard the ship
- Greenland voyages cruise passenger tax

Exclusions

RATES SPECIFICALLY DO NOT INCLUDE:

- Charter Flight & Hotel Package*
- International airfare
- Arrival transfers in Reykjavik
- Passport and visa expenses
- Government arrival and departure taxes not mentioned above
- Baggage, cancellation, interruption and medical travel insurance—strongly recommended
- Excess-baggage fees on domestic and international flights
- Mandatory waterproof pants for Zodiac cruising, or any other gear not mentioned
- Laundry, bar, spa and other personal charges unless specified
- Phone charges may vary by location
- Voluntary gratuity at the end of the voyage for shipboard staff and crew
- Additional overnight accommodation
- Adventure Options not listed in Included Activities.

*CHARTER FLIGHT & HOTEL PACKAGE INCLUDES:

- One night's pre-expedition hotel accommodation in Reykjavik (breakfast included)
- Charter flights between Nuuk and Reykjavik
- Group transfers between the Reykjavik airport and the ship
- Group transfer from Reykjavik airport to hotel on disembarkation day
- One night's post-expedition hotel (breakfast included)



Your Expedition Team

Our Expedition Leaders and their teams bring diverse expertise in subjects as varied as polar history, marine biology, glaciology, ornithology and photography. Their knowledge and enthusiasm will greatly enhance your immersion into the polar environment and further deepen your connection to the Arctic.

With over 30 years of experience bringing passengers to remote polar regions and an industry-leading staff-to-guest ratio, we know how to safely handle the unexpected. Ensuring this hard earned experience is passed on, our expedition staff receive comprehensive training in Quark Academy, which provides hands-on polar expedition training prior as part of our onboarding process as well as ongoing training for experienced staff.





On-Ship Dining

Every on-board meal is included in the cost of your trip.



12 BREAKFASTS



12 LUNCHES



12 DINNERS

If there's one constant on board, it's incredible food. You enjoy three delicious meals daily—all included. Let us know before your expedition about any dietary restrictions.

Breakfasts and lunches are typically buffet-style, while dinners are plated. À la carte meals are made at the time of your order, ensuring top quality every time.

Coffee, tea, cocoa, and water stations are available—at no charge—24/7.

Complimentary soft drinks and juices are served during meals and when the bar is open. Bonus: enjoy complimentary alcohol throughout your voyage (see "Raise A Glass" sidebar for details).

Premium wines and champagne are available for purchase. Our well-stocked bars are open late morning, afternoon, and evening—hours may shift slightly to accommodate the expedition schedule.

Raise A Glass

Enjoy complimentary select beer, wines and select cocktails during bar service hours and dinner—throughout your voyage—as part of our "Raise A Glass and Stay Connected" Program.



Possible Excursions

When traveling in extremely remote regions, your Expedition Team must consider the sea, ice and weather to guide the route and itinerary details. The following sites are a sample of what you may experience on your expedition, whether by ship, Zodiac cruise, helicopter, or shore landing.

Greenland

NUUK

Explore Old Nuuk, the city's historic heart, where colorful wooden houses line quiet streets overlooking the waterfront. A short walk leads to the landmark Hans Egede Church and the nearby statue of Hans Egede, key symbols of the city's past. If time permits, visit the Greenland National Museum & Archives, one of the country's most important cultural institutions. Its exhibits offer insight into Greenland's history and traditions, including the traditional kayak—a national symbol with origins dating back over 4,000 years—and the museum's renowned 500-year-old Greenlandic mummies.

BRATTAHLÍÐ

Brattahlíð (meaning “the steep slope”) was Erik the Red's estate in the Viking Eastern Settlement, which he established in 985. Brattahlíð was the site of the first Greenlandic parliament, as well as Greenland's first Christian church, built for Erik's wife, Tjodhilde. The ruins of several buildings, including living quarters, outhouses and Tjodhilde's church, are still visible today, and replicas of the original chapel and longhouse are located nearby. The present village, Qassiarsuk (the Greenlandic name for Brattahlíð), was founded in 1924. The area is home to some of the most fertile land in the country, just as it was when Erik first laid eyes on it.

GREENLAND ICE SHEET

The largest mass of ice in the Northern Hemisphere—one of only two polar ice sheets on the planet, second only to the Antarctic ice sheet—is the dominant feature in Greenland. The Greenland Ice Sheet covers 80 percent of the country's land area and is nearly 2 miles (3 km) thick. It spans coast to coast, contained to the east and west only by the coastal mountains. Stepping onto the ice, which



moves undetected beneath your feet, is a moment you'll never forget.

KUJATAA

This sub-Arctic farming landscape—the earliest example of agriculture in the Arctic—was designated a UNESCO World Heritage Area in 2017. Featuring archeological sites and agricultural lands, Kujataa is comprised of five areas (Igaliku, Hvalsey, Qassiarsuk, Sissarluttoq and Tasikuluulik) that represent the most comprehensive cultural histories of Norse and Greenlandic farmer-hunters. In honor of the designation, Greenlandic Post issued a stamp in 2018 showcasing the landscape of Kujataa.

KANGERLUSSUATSIQ (LINDENOW FJORD)

Ships rarely venture into Kangerlussuatsiaq (Lindenow fjord), one of the most beautiful fjords in Greenland. With your Expedition Team in the lead, you may cruise by Zodiac in an arm of the fjord while our staff use their years of Arctic experience to spot wildlife. You may also see waterfalls along the sheer rock face or enjoy a hike amongst waterfalls, flowers and blueberry fields.

AAPPILATTOQ

Aappilattoq, home to about 100 people, is the only settlement in the remote Kujalleq region of South Greenland. Inhabited since the 19th century, Aappilattoq was only founded in 1922. Its name derives from the Greenlandic word for “red,” inspired by the red mountain towering above the settlement.

IKERASSUAQ (PRINS CHRISTIAN SUND)

The massive tidewater glaciers and dramatically steep cliffs dominating this picturesque fjord system, named after Christian III of Denmark, are one of the many reasons South Greenland has earned the moniker Arctic Patagonia. Aappilattoq, home to about 100 people, is the only settlement in this remote region. This is an ideal place for ship cruising, as the icebergs here come in all shapes and sizes.

TASERMIUT FJORD

Paddling and Zodiac cruising into Tasermiut Fjord allow for a closer connections with the landscape that

is considered one of the most beautiful places in Greenland. At 43 miles (70 km) long, this picturesque fjord will be a highlight of your south Greenland experience, even if you don't opt to camp.

EXPEDITION SPIRIT

Embracing the unexpected is part of the legacy—and excitement—of expedition travel. When traveling in extremely remote regions, your Expedition Team must consider the sea, ice, wildlife, and weather to guide the route and itinerary details. This itinerary is a tentative outline of what you'll experience on this voyage; please be aware that no specific itinerary can be guaranteed. By the same token, wildlife sightings as described are expected, but not guaranteed. Your Expedition Team will use their considerable experience to seek out wildlife in known habitats, but the presence of any particular species of bird or marine wildlife is not guaranteed.



What to pack on your Greenland expedition

BY SEA AND AIR

All transfers ship to shore, helicopter flights and Zodiac/ship cruising.

- Waterproof pants (mandatory for every Zodiac and helicopter ride)
- Base-layer wool or synthetic top* Mid-layer warm or fleece bottom*
- Base-layer wool or synthetic bottom* Mid-layer warm or fleece top*
- Warm hat that covers ears (bring an extra)
- Scarf, buff, or other face protection
- Warm wool or synthetic socks (keep a dry pair in your bag, and bring extras for layering)
- Waterproof gloves or mitts (bring an extra, lighter pair for hiking)
- Glove liners* Hand and feet warmers* Binoculars
- Polarized sunglasses with UV protection (consider bringing an eyewear retainer: string/clip etc.)
- Sunscreen Ski goggles (for Zodiac cruising on snowy or windy days)
- Waterproof, lightweight backpack or dry sack and/or rain sleeve for camera or a waterproof phone case (to keep camera & gear dry)

*recommended layering depending on the conditions of the day and reflecting your personal thermo-regulation comfort levels.

BY LAND (Shore Excursions and Hiking)

In addition to the gear requirements (as above) mandatory for the transit from ship to shore, it is recommended to bring:

- Worn-in Hiking footwear: While Muck-boots are provided and encouraged for most shore excursions, additional hiking footwear (Goretex-lined boots or similar water-proof hiking boots) can add to your hiking comfort, especially if you are a keen hiker
- (Smart) Wool or synthetic hiking socks for above footwear (bring an extra pair)
- Lightweight and quick-dry, trekking pants that may or may not convert to zip-off shorts* (*depending on your thermo-regulation)
- Breathable waterproof pants* and rain jacket** for outdoor activities in inclement weather (*can be the same pair you use for Zodiac operations / ** can be outer shell of complimentary Quark 3in1 Parka)
- Comfortable long or short-sleeve shirt for hiking either synthetic/quick-dry or merino (smart) wool
- (Hiking) gloves (medium thickness, waterproof preferred)
- Hat, buff or scarf (for wind and weather protection)
- UV protection (hat, polarized sun glasses, sun block, lip balm)
- Collapsible walking sticks for hikes (if required)
Quantities are available to borrow on every vessel
- Additional reusable thermos or water bottle
(in addition to the reusable collapsible water bottle provided)

WHAT TO BRING Packing for the Polar Regions doesn't have to be daunting, and to make it easier for you, all Quark Expeditions voyages include a Quark parka to keep, and a loan of insulated waterproof boots. Additional suggested items include:

TO WEAR ON BOARD

- Comfortable casual clothing like lighter shirts, pants or jeans, etc. (in case the ship gets warm)
- Comfortable non-slip closed-toed, heelless shoes (flip flops, sandals or slip-on shoes should not be worn on board due to safety concerns)
- Workout attire (for the fitness center and other indoor activities)
- Swimsuit for the Polar Plunge. Some vessels may also have a pool, hot tub, sauna and/or steam room. See your ship book for details.

Just a reminder: No formal evening wear required on our voyages but if you would like to bring something a little more dressy for the Captain's welcome and farewell cocktails you may certainly do so.

ADDITIONAL ITEMS

- Passport, visas, immunization records, travel documents, etc. as required
- Camera gear—complete with charger, storage medium, transport & cleaning kit (lens cloth etc.) and extra batteries
- Waterproof cell phone case or rain sleeve for camera
- Earplugs and eye masks for sleeping
- Voltage converters and plug adapters (see ship book for details)
- Moisturizer for face and hands (skin dryness due to wind and temperature changes)
- Seasickness, indigestion, headache, or other medications
- Small amount of local currency (see pre-departure book for more details)
- Insect repellent Mosquito netting



Scan this QR code or [click here](#) to watch our video on what to pack before you go.

- › To view our packing checklist online, visit: [QuarkExpeditions.com/What-to-Pack/Greenland](https://www.quarkexpeditions.com/What-to-Pack/Greenland)
- › Related topics are covered on our Frequently Asked Questions page: [QuarkExpeditions.com/Frequently-Asked-Questions](https://www.quarkexpeditions.com/Frequently-Asked-Questions)

WEATHER CONDITIONS & TEMPERATURES

Polar weather is extremely variable; temperatures may hover around the freezing mark and winds can be strong. The extended daylight warms sheltered areas so that you may sometimes find it warm enough for t-shirts. However, you may encounter rain, snow squalls, fog and white-outs during an expedition and should be ready for any conditions.



To book your next adventure
Contact your Travel Professional
or a Quark Expeditions®
Polar Travel Advisor

Toll free and local numbers:

North America (Toll Free) 1 888 332 0008

U.K. Tel +44 203 514 2712

U.K. (Toll Free) 0 808 120 2333

Australia Tel +61 2 72580333

Australia (Toll Free) +61 1800 953518

France Tel +33-1 80 14 01 05

France (Toll Free) 08 05 08 66 46

[QuarkExpeditions.com](https://www.QuarkExpeditions.com)

Photos captured with a telephoto lens from a responsible distance, following regulatory/AECO guidelines.

PHOTO CREDITS: (over all Expedition Brochures for the Arctic 2027 season):

Acacia Johnson; David Merron; Nicky Souness; Samantha Crimmin; Sam Edmonds; Michelle Sole; Cindy Miller Hopkins; Sue Flood; Hugo Perrin; Peter Lindstrom; Gajan Balan; Jonas Fellenstein; Nicolas Singh; Rogelio Espinosa; Grange Productions; Visit Greenland; Visit Scotland; Newfoundland Labrador; Fokus Productions; Adobe Stock; iStock

EXPEDITION BROCHURE
April 27, 2026

P O L A R

O B S E S S E D

S I N C E

1 9 9 1