

Arctic 2027

 **Quark  
Expeditions®**  
Polar-Obsessed Since 1991

# Spitsbergen Circumnavigation: A Rite of Passage

Onboard *Ultramarine*



# Contents

1	Expedition Overview
2	Itinerary
4	Science and Discovery
5	Arrival and Departure Details, and International Flight Planning
7	Your Ship Options
8	Included Activities
9	Adventure Options
10	Conservation and Community
11	Departure Dates
12	Inclusions and Exclusions
13	Your Expedition Team
14	Meals on Board
15	Possible Excursions
18	Packing Checklist





# Expedition Overview

## Spitsbergen Circumnavigation: A Rite of Passage

This 15-day itinerary is our most comprehensive exploration of Spitsbergen, the largest island of the Svalbard archipelago. What makes it truly exceptional is that it's the only expedition where we attempt a full circumnavigation of Spitsbergen—a rare Arctic rite of passage reserved for the boldest travelers. This is an Arctic adventure few will ever experience. Witness iconic wildlife, including walrus, reindeer, and elusive polar bears. Step ashore at secluded landing sites steeped in 16th-century maritime history, and prepare to be awestruck as you visit two of the Arctic's most extraordinary birdwatching havens: 14th of July Glacier and Alkefjellet.

### Highlights



Spot iconic Arctic wildlife, such as polar bears, walruses and reindeer



View numerous Arctic bird species, like puffins, Arctic terns and purple sandpipers



Anticipate a full circumnavigation of Spitsbergen



Explore glaciers, fjords, icebergs and more with included Zodiac cruising



Immerse yourself in the icy realm of the Arctic with optional kayaking adventures



Hike the tundra and polar desert





# Itinerary

## DAY 1 | ARRIVE IN HELSINKI, FINLAND

Arrive in the Finnish capital and make your way to the group hotel located right at Helsinki airport. You will have the rest of the day to explore explore the many museums, galleries and restaurants, relax at a Finnish sauna or wander the vibrant Design District. If you do plan to see Helsinki city center there is convenient rail service. Allow 40 minutes for the transfer.

## DAY 2 | FLY TO LONGYEARBYEN, SVALBARD AND EMBARK

This morning, the group will transfer to the airport and board our private charter flight to Longyearbyen, Spitsbergen's largest settlement. As your ship sets sail, enjoy your first view of the island's rugged, glacier-topped mountains rising majestically from frigid waters.

## DAYS 3-13 | EXPLORING SVALBARD

Expect a new adventure every day as we begin our journey by heading north and around the island of Spitsbergen, exploring smaller, outlying islands. We plan to circumnavigate Spitsbergen, but if conditions are favorable, we will also attempt a larger circumnavigation of the archipelago, including many of the outer islands in Svalbard. Every expedition will be different, depending on the weather and ice, but some of the places we may visit include the 14th of July Glacier, Ny-London, Phippsøya, Alkefjellet and the seldom-visited Kvitøya.

These names may seem strange to you, but each site has its own unique appeal. There is no shortage of natural beauty in Svalbard, where colorful tundra meadows are complemented by immense glaciers. For birders, 14th of July Bay is home to puffins, purple



### SPITSBERGEN CIRCUMNAVIGATION: A Rite of Passage

Onboard *Ultramarine* ———  
Flights to/from Helsinki - - -



sandpipers, black-legged kittiwakes, pink-footed geese, and barnacle geese, while Alkefjellet's cliffs are teeming with nesting Brünnich's guillemots (thick-billed murre).

Always on the lookout for wildlife, be sure to have your camera ready to capture reindeer when we visit sites like Ny-London, Sundneset and Alkhornet. Phippsøya and Isbukta are often home to sea ice, the polar bear's preferred habitat for hunting, which translates into great potential for you to view and capture them in action.

A big part of appreciating Svalbard comes from understanding the history—not just how people live today, but also how this land was first explored. Whaling was a key industry, and you will see remains

of outposts from the 16th century, plus other evidence of whaling at landing sites such as Smeerenburg.

#### **DAY 14 | DISEMBARK IN LONGYEARBYEN AND FLY TO HELSINKI**

Your adventure ends in the frontier-style settlement of Longyearbyen. From here, we'll transfer you to the airport for your return group charter flight to Helsinki, included in the Charter Flight & Hotel Package. Upon arrival in Helsinki, you'll transfer to your included hotel for the night.

#### **DAY 15 | ONWARD FLIGHT HOME**

After breakfast, you can make your way to the airport for your onward flight home, or stay to explore Finland's culturally-rich capital on your own if you've made prior arrangements.

### **EXPEDITION SPIRIT**

Embracing the unexpected is part of the legacy—and excitement—of expedition travel. When traveling in extremely remote regions, your Expedition Team must consider the sea, ice, wildlife, and weather to guide the route and itinerary details. This itinerary is a tentative outline of what you may experience on this voyage; please be aware that no specific itinerary can be guaranteed. By the same token, wildlife sightings as described are expected, but not guaranteed. Your Expedition Team will use their considerable experience to seek out wildlife in known habitats, but the presence of any particular species of bird or marine wildlife is not guaranteed.





# Science & Discovery

A new initiative designed to foster community, curiosity and education.

Beginning in our Arctic 2027 season on select *Ultramarine* itineraries, Quark Expeditions is collaborating with leading scientists and researchers to enrich guest learning on- and off-ship.

**Guest Engagement:** Through researcher-led sessions, and interactive learning and field experiences with our expedition team, guests will gain a better understanding and appreciation of the polar wilderness.

**This Science & Discovery program will enable guests to:**

- **Interact and connect with scientists and researchers** who are actively collecting data during expeditions.
- **Participate in citizen science programming** to broaden their understanding and knowledge of the incredible polar ecosystem.
- **Work with our expedition team** to help collect and record data, ranging from experiences such as conducting seabird surveys on deck to documenting whale sightings on Zodiac excursions or joining interactive sampling activities to measure water conditions.

## SCIENCE IN THE FIELD

Quark Expeditions supports academic research through partnerships with institutions such as Seabird Watch to deepen our understanding through access to projects that are contributing to published research and projects of high importance.

## CITIZEN SCIENCE

In collaboration with the Polar Citizen Science Collective and Fjord Phyto, guests can engage in meaningful scientific data collection that supports targeted field research for projects like Happywhale.

## QUARK SCIENCE HUB

This designated space on *Ultramarine* enables guests to share knowledge, information and insights with scientists, researchers, and our Expedition Guides.



Gather with scientists, researchers and expedition guides to share findings and insights from the voyage.



Engage with interactive digital displays featuring multimedia content for self-guided discovery even when staff aren't present.



Learn how data collection methods, such as drones, wildlife tags, and biopsy and guano sampling, enable us to study the health, population, and migratory pathways of unique birds, whales, and seals.



Review and discuss observations and explore samples collected during science Zodiac cruises with other participants.

*Note: The Science Hub is open to guests for self-guided exploration when staff are otherwise occupied.*

**THE POLAR COLLECTIVE**  
protect the poles together.







# Arrival and Departure Details, and International Flight Planning



\* Arrive anytime on Day 1 or earlier. Day 1 includes an optional briefing.  
 International flights are not included in the cost of the voyage.

## Arrival Day and Embarkation

### DAY 1 — ARRIVING AND HOTEL NIGHT IN HELSINKI

You may arrive in Helsinki at any time during Day 1 of the itinerary. Your included accommodation will be at the airport hotel, so arrival transfers are not necessary. On arrival at the hotel, you will receive a welcome letter outlining the departure information for the following day's flight. Please keep in mind that your hotel room may not be ready for check in until 3pm. An agent representing Quark Expeditions® will be available in the lobby of the hotel later in the day to answer any questions.

### DAY 2 — CHARTER FLIGHT AND EMBARKATION IN LONGYEARBYEN

After a well rested night at your hotel you will join your flight up to Longyearbyen. Upon arrival in Longyearbyen, you will be transferred from the airport to a drop off point and your luggage will be taken directly to the ship. Details of ship transfer times will be provided during your arrival transfer. Due to port logistics, it is possible that you may need to board the vessel by Zodiac, rather than from the pier.

### PLEASE NOTE

There is a strict luggage weight limit on checked luggage and cabin baggage on the flights between Helsinki and Longyearbyen. Should you have additional luggage, it can be stored at the hotel in Helsinki. There is NO option to pay for additional luggage.

### You will find in your final documents:

- › Luggage weight restrictions on charter flights
- › Hotel information and check in time
- › Charter flight time to embarkation point
- › Embarkation plan
- › Departure charter flight time

## Final Day and Departure

### DISEMBARKATION IN LONGYEARBYEN AND CHARTER FLIGHT TO HELSINKI

Your voyage is scheduled to end back in Longyearbyen where you will disembark after breakfast. The process takes about an hour and due to port logistics, may involve one last Zodiac ride to the pier. If time allows, you can spend the day exploring Longyearbyen before being transferred to the airport for your charter flight to Helsinki.

### DEPARTING FROM HELSINKI

Upon arrival in Helsinki, you'll be transferred to your included hotel for the night. In the morning, make your way to the airport to catch your flight onward.

### PLEASE NOTE

#### Helsinki Hotel Accommodations:

The Charter Flight & Hotel Package for this expedition includes two nights of hotel accommodations, on Day 1 and Day 14 of your expedition, at a hotel attached to Helsinki Airport. The airport is a 40 minute train ride from the city center.

## Arrival and Departure Transfers

### HELSINKI AIRPORT TRANSFERS

Our hotel accommodations are provided at Helsinki airport. Transfers should not be required and are not provided.







## ULTRAMARINE

The technologically advanced *Ultramarine* is built to go beyond the familiar in polar travel and to immerse guests in the best the region has to offer.

Equipped with two twin-engine helicopters and 20 quick-launching Zodiacs, *Ultramarine* offers the industry's largest portfolio of off-ship adventures. The vessel features the most spacious suites in its category, fine dining, breathtaking public spaces, exceptional wildlife-viewing areas, and sustainability systems that exceed industry standards. *Ultramarine* also features an onboard Science Hub, the centerpiece of our Science & Discovery program.

Wellness amenities include Tundra Spa with VOYA treatments, morning stretch classes, a sauna, a fully equipped fitness center, and health-conscious dining designed to restore balance and vitality at sea.

*Ultramarine* is designed to deliver unforgettable polar memories.

### SHIP SPECIFICATIONS:

Staff and Crew: 140

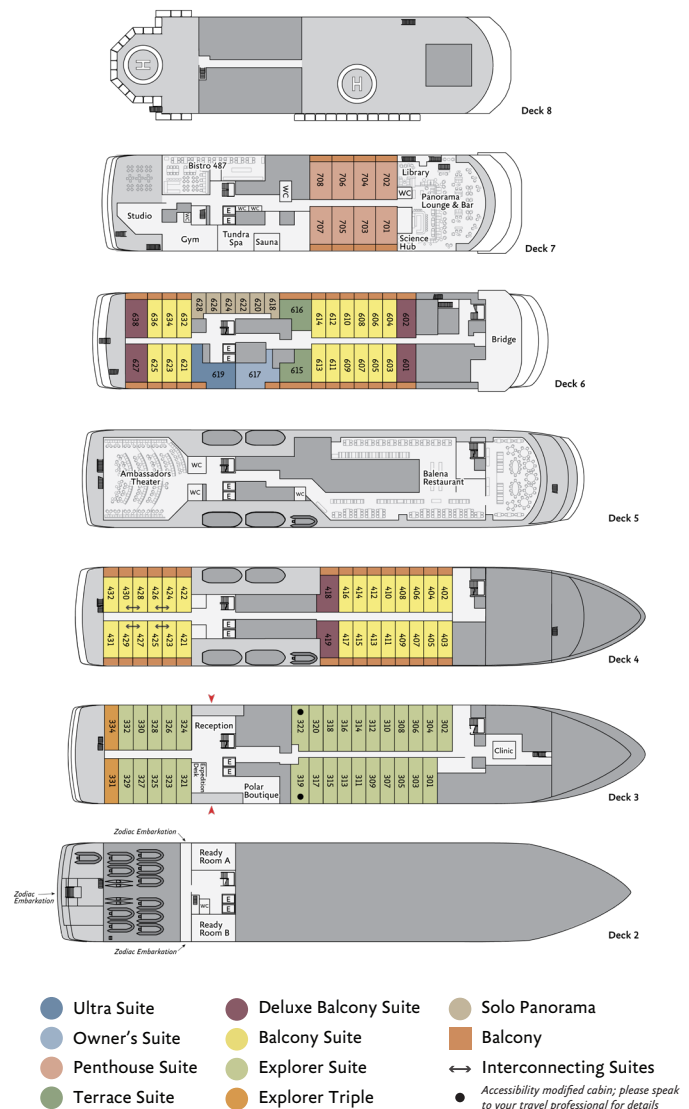
Guests: 199

Lifeboats: 4, fully enclosed

Ice Class: PC6

Visit [QuarkExpeditions.com](http://QuarkExpeditions.com) to view deck plan details.

*Ultramarine's* twin-engine helicopters do not operate on our Svalbard voyages.





# Included Activities

All of these activities are included in the price of your trip.

Ready for a little adventure beyond your ship? Each Quark Expeditions® voyage offers a variety of recreational activities to enhance your polar experience.

## ZODIAC CRUISING

Zodiacs are the workhorses of polar expeditions, taking you to places the ships can't access, allowing you to reach remote shorelines, explore shallow inlets and spot wildlife. Expedition staff make stepping in and out of them safe and comfortable, and your Zodiac drivers will provide active interpretation, making the landscape come even more alive.

## HIKING

Led by experienced staff, exploring on foot is one of the best ways to appreciate the polar landscapes. Our guides are able to accommodate a range of skill levels.

## PRESENTATIONS

Enjoy daily chats with and presentations by our world-class onboard polar experts—expedition guides, specialists, photography guides and other special guests who will introduce you to the fascinating history, biology, ornithology, glaciology and geology of the region, and much, much more.

## SCIENCE & DISCOVERY

Our Science & Discovery program offers guests the unique opportunity to engage directly with scientists and researchers and participate in citizen science activities with the expedition team to collect and record data. Activities include conducting seabird surveys on deck, documenting whale sightings, and participating in interactive water sampling activities to measure environmental conditions. This program provides travelers with rare, first-hand experiences that contribute to global

scientific research and deepens their understanding of and appreciation for the polar environment.

## POLAR PLUNGE

This rite of passage, scheduled only once per expedition, gives you the chance to jump safely into the bracing Arctic waters under the watchful eye of our staff—and just about every single camera on board.

## PHOTOGRAPHY

Documenting your voyage so you can take the memories home is a rewarding experience. Our photography guide will help you hone your skills to capture the beauty of the polar regions.

*Contact your Polar Travel Adviser or your Travel Professional for more information about your Included Activities and Adventure Options, including the necessary experience, physical requirements and cost.*





# Adventure Options

All of these activities cost extra and should be booked in advance of your trip.



## PLEASE NOTE

For all paid activities pre-booking is required. We recommend booking early as spaces fill quickly.

### SEA KAYAKING

Imagine gliding across the surface of a bay in the presence of icebergs and glaciers. Our Sea Kayaking program is a great way to intimately explore your surroundings. A small group of kayakers will plan to go out multiple times per voyage as an alternative to shore landings or Zodiac cruises.

The number of opportunities to kayak is weather dependent, and will be conducted only during calm conditions. Prior kayaking experience is required, and you must be able to do a wet exit to participate. Beginners interested in kayaking should consider participating in the Paddling Excursion.

### PADDLING EXCURSION

If you're interested in kayaking but would like to try something a bit less demanding than Sea Kayaking, you're the perfect candidate to sign up for a one-time paddle on our stable sit-on-top kayaks—perfect for anyone with minimal or no kayaking experience. Small groups of passengers will be taken out on calm days, with our expert guides always present to provide instruction and help you connect with the polar sea. Two groups of 10 will be pre-booked, and once successfully completed, any subsequent outings will be offered via lottery on board.





# Our Commitment to Conservation & Community

We're proud to partner with local communities to create immersive guest experiences that build respect for wildlife, culture and the land, and to work with leading scientists to support the conservation of the Arctic regions.

## Empowering Local Development

We champion Arctic communities' goals for economic development and sustainable tourism through local hiring, infrastructure support, and advance visit planning.

## Investing Directly in Communities

With guest support, we help fund community-led projects—from food banks to cultural and language-based programs.

## Co-creating with Community Partners

By partnering with local groups, we create authentic experiences—such as Tundra to Table, developed with [Igapall](#), which enables Inuit chefs to share Greenlandic cuisine and culture. This program is available on most *Ultramarine* itineraries that operate in Greenland and the Canadian High Arctic.

*To also learn about our conservation efforts, and how we connect guests to the natural world through hands-on experiences and education, visit us online at [Community & Conservation](#).*



## Community

We deliver authentic experiences for our guests that benefit local partners and the communities we visit.





# Departure Date

Spitsbergen Circumnavigation: A Rite of Passage

ULTRAMARINE

<i>Dates</i>	<i>Days</i>	<i>Start / End</i>	 Sea Kayaking	 Paddling Excursion
ARCTIC 2027				
JUN 30 - JUL 14, 2027	15	Helsinki	\$	\$

\$ Paid Activities



# Inclusions and Exclusions

## Inclusions

### RATES INCLUDE:

- An official Quark Expeditions® parka to keep
- Leadership throughout your voyage by our experienced Expedition Leaders, including shore landings and other activities
- All Zodiac transfers and cruising as per the daily program
- All shore landings as per the daily program
- Shipboard accommodation with daily housekeeping
- All meals, snacks, soft drinks and juices on board throughout your voyage. (Please inform us of any dietary requirements as far in advance as possible.)
- Complimentary select beer, wines and cocktails during bar service hours and dinner
- Complimentary coffee, tea and cocoa available around the clock
- Formal and informal presentations by our Expedition Team and guest speakers as scheduled
- A photographic journal documenting the expedition
- A pair of waterproof expedition boots on loan for landings and Zodiac cruising excursions
- Hair dryer and bathrobes in every cabin
- Complimentary Wi-Fi service on one device permitting basic Internet browsing, email, posting on social media and voice applications. (Premium packages are available for more data-intensive applications.) Note: Internet access in the polar regions is subject to geography, climate, and other factors beyond our control.
- All miscellaneous service taxes and port charges throughout the program
- All luggage handling aboard the ship
- Transfers between Longyearbyen town center, port, and airport on embarkation and disembarkation day

## Exclusions

### RATES SPECIFICALLY

### DO NOT INCLUDE:

- Charter Flight & Hotel Package\*
- International airfare
- Arrival and departure transfers in Helsinki
- Passport and visa expenses
- Government arrival and departure taxes not mentioned above
- Baggage, cancellation, interruption and medical travel insurance—strongly recommended
- Excess-baggage fees on international and domestic flights
- Mandatory waterproof pants for Zodiac cruising, or any other gear not mentioned
- Laundry, bar, spa and other personal charges unless specified
- Phone charges may vary by location
- Voluntary gratuity at the end of the voyage for shipboard staff and crew
- Additional overnight accommodation
- Adventure Options not listed in Included Activities

### \*CHARTER FLIGHT & HOTEL PACKAGE INCLUDES:

- Pre- and post-expedition hotel nights at Helsinki airport hotel, with breakfast
- Charter flight from Helsinki to Longyearbyen
- Arrival and departure transfers in Longyearbyen
- Charter flight from Longyearbyen to Helsinki





# Your Expedition Team

Our Expedition Leaders and their teams bring diverse expertise in subjects as varied as polar history, marine biology, glaciology, ornithology and photography. Their knowledge and enthusiasm will greatly enhance your immersion into the polar environment and further deepen your connection to the Arctic.

With over 30 years of experience bringing passengers to remote polar regions and an industry-leading staff-to-guest ratio, we know how to safely handle the unexpected. Ensuring this hard earned experience is passed on, our expedition staff receive comprehensive training in Quark Academy, which provides hands-on polar expedition training prior as part of our onboarding process as well as ongoing training for experienced staff.



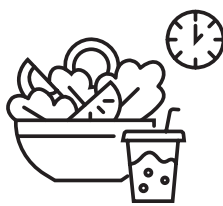


# On-Ship Dining

Every on-board meal is included in the cost of your trip.



**12 BREAKFASTS**



**12 LUNCHES**



**12 DINNERS**

If there's one constant on board, it's incredible food. You enjoy three delicious meals daily—all included. Let us know before your expedition about any dietary restrictions.

Breakfasts and lunches are typically buffet-style, while dinners are plated. À la carte meals are made at the time of your order, ensuring top quality every time.

Coffee, tea, cocoa, and water stations are available—at no charge—24/7.

Complimentary soft drinks and juices are served during meals and when the bar is open. Bonus: enjoy complimentary alcohol throughout your voyage (see "Raise A Glass" sidebar for details).

Premium wines and champagne are available for purchase. Our well-stocked bars are open late morning, afternoon, and evening—hours may shift slightly to accommodate the expedition schedule.

## Raise A Glass

Enjoy complimentary select beer, wines and select cocktails during bar service hours and dinner—throughout your voyage—as part of our "Raise A Glass and Stay Connected" Program.





## Possible Excursions

When traveling in extremely remote regions, your Expedition Team must consider the sea, ice and weather to guide the route and itinerary details. The following sites are a sample of what you may experience on your expedition, whether by ship, Zodiac cruise, or shore landing.

### Spitsbergen

#### ALKEFJELLET

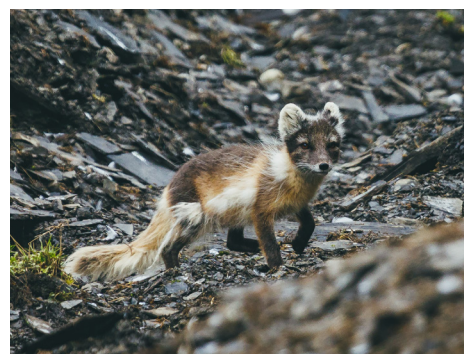
This cliff is a seabird colony, where Brünnich's guillemots (thick-billed murres) raise their young. An estimated 60,000 breeding pairs reside on the basalt cliffs. The birds do not build nests; rather, they lay eggs on the bare ledges of the cliff. Witness the spectacle of thousands of birds flying to and from their cliff edge, speckling the sky and water, like a beehive on a much grander scale.

#### DISKOBUKTA

This bay on the west shore of Edgeøya affords a landing site with a box canyon where black-legged kittiwakes raise their young. Arctic foxes have been seen combing the canyon floor to feed on scraps that have fallen from the nests above. Watch for the bones of ancient North Atlantic right whales—evidence that the land is rebounding since the last major glaciation.

#### ISBUKTA

On the eastern shore of the southern tip of Svalbard is Isbukta, which means 'Ice Bay.' Arctic terns, skuas and bearded seals inhabit the bay. Polar bears are known to patrol the area as well.





## KVITØYA

Kvitøya (also known as White Island) is almost entirely covered by an immense ice cap. Part of the Northeast Svalbard Nature Reserve, Kvitøya, at 80°N/32°30'E, is the archipelago's easternmost and most remote island. It lies about 75 kilometers (46 miles) west of Victoria Island in Franz Josef Land, Russia. Surrounded by dense pack ice until late summer, it serves as a High Arctic haven for polar bears and walrus. Kvitøya is also remembered as the site where Swede Salomon August Andrée and his companions perished during their ill-fated 1897 balloon expedition to the North Pole.

## LILLIEHÖÖK GLACIER

In 2005, nearly 100 years after his great-great-grandfather conducted scientific investigations here, Prince Albert II of Monaco returned to Lilliehöök Glacier to honor his ancestor's memory. Here, you can take a Zodiac cruise amid labyrinths of sparkling icebergs, and witness breathtaking panoramas of ice. You may even spot bearded seals hauled out on the floes.

## LONGYEARBYEN

Home to 2,400 people, the administrative capital of Svalbard is situated on the southern side of Adventfjorden. The settlement was founded in 1905 by John Munroe Longyear, the majority owner of the Arctic Coal Company of Boston. Today as much as ever, this is a true frontier town.

## MOFFEN ISLAND

At 80 degrees North, Moffen Island is designated as a protected sanctuary for walrus, which can be viewed from the ship. Keep your binoculars handy.

## MONACO GLACIER

Prince Albert I of Monaco, a pioneer of oceanography, led an expedition to Svalbard in 1906. His team used sophisticated photographic techniques to understand the shape and position of several glacier fronts. Monaco Glacier honors the expedition, the prince and the principality over which he reigned. While touring the glacier front by Zodiac cruise, listen to the crackle and pop of the brash ice, search for seals and have a chance to admire a natural sculpture gallery.





## NORDAUSTLANDET ISLAND

This is the second-largest island in the entire Svalbard archipelago, and home to the polar desert. Featured here is Bråsvellbreen, an ice cap connected to the larger Austfonna, which together form a 112-mile- (180 km) long ice cliff. Bråsvellbreen's glacier face makes for an impressive sight during a Zodiac cruise, stretching all the way to the horizon.

## HORNSUND

The most southerly fjord in Svalbard offers some of the most spectacular scenery, with dramatic calving glaciers, drifting pack ice and majestic peaks (the highest of which are often shrouded in mist). A Polish research station has operated on the northern shore of Hornsund since 1957. Part of Sør-Spitsbergen National Park, this pristine area is rich in wildlife—reindeer, Arctic fox and polar bears can be spotted hunting for food, while seals bask on floating ice.

## SJUOYANE (SEVEN ISLANDS)

This small archipelago is the northernmost land in Svalbard. Englishmen left their mark following key expeditions in 1773 and 1827. The islands are named after naval officers that took part, with the smallest and least significant island being named Nelsonøya, after the lowly midshipman who was promoted over the years to the rank and title of Vice Admiral Horatio Lord Nelson. Featuring austere polar desert landscapes, and often shrouded in pack ice, these islands are closer to the North Pole than anywhere else in Svalbard.

## EXPEDITION SPIRIT

Embracing the unexpected is part of the legacy—and excitement—of expedition travel. When traveling in extremely remote regions, your Expedition Team must consider the sea, ice, wildlife, and weather to guide the route and itinerary details. This itinerary is a tentative outline of what you'll experience on this voyage; please be aware that no specific itinerary can be guaranteed. By the same token, wildlife sightings as described are expected, but not guaranteed. Your Expedition Team will use their considerable experience to seek out wildlife in known habitats, but the presence of any particular species of bird or marine wildlife is not guaranteed.



# What to pack on your Arctic expedition

## BY SEA

All transfers ship to shore and Zodiac/ship cruising.

- ☐ Waterproof pants (mandatory for every Zodiac ride)
- ☐ Base-layer wool or synthetic top\*
- ☐ Base-layer wool or synthetic bottom\*
- ☐ Mid-layer warm or fleece top\*
- ☐ Mid-layer warm or fleece bottom\*
- ☐ Warm hat that covers ears (bring an extra)
- ☐ Scarf, buff, or other face protection
- ☐ Warm wool or synthetic socks (keep a dry pair in your bag, and bring extras for layering)
- ☐ Waterproof gloves or mitts (bring an extra, lighter pair for hiking)
- ☐ Glove liners\*
- ☐ Hand and feet warmers\*
- ☐ Binoculars
- ☐ Polarized sunglasses with UV protection (consider bringing an eyewear retainer: string/clip etc.)
- ☐ Ski goggles (for Zodiac cruising on snowy or windy days)
- ☐ Waterproof, lightweight backpack or dry sack and/or rain sleeve for camera or a waterproof phone case (to keep camera & gear dry)

\*recommended layering depending on the conditions of the day and reflecting your personal thermo-regulation comfort levels.

## BY LAND (Shore Excursions and Hiking)

In addition to the gear requirements (as above) mandatory for the transit from ship to shore, it is recommended to bring:

- ☐ Hat, buff or scarf (for wind and weather protection)
- ☐ UV protection (sun hat, polarized sun glasses, sun block, lip balm etc.)
- ☐ Collapsible walking sticks for hikes (if required)  
Quantities are available to borrow on every vessel
- ☐ Additional reusable (thermos-regulating) water bottle (in addition to the reusable collapsible water bottle provided)

**WHAT TO BRING** Packing for the Polar Regions doesn't have to be daunting, and to make it easier for you, all Quark Expeditions voyages include a Quark parka to keep, and a loan of insulated waterproof boots. Additional suggested items include:

## TO WEAR ON BOARD

- ☐ The complimentary Quark 3-in-1 Parka provided on board is designed with a waterproof shell that can be worn out on deck, and a removable liner that you can wear to stay comfortable indoors)
- ☐ Comfortable casual clothing like lighter shirts, pants or jeans, etc. (in case the ship gets warm)
- ☐ Comfortable non-slip closed-toed, heelless shoes (flip flops, sandals or slip-on shoes should not be worn on board due to safety concerns)
- ☐ Workout attire (for the fitness center and other indoor activities)
- ☐ Swimsuit for the Polar Plunge. Some vessels may also have a pool, hot tub, sauna and/or steam room. See your ship book for details.

**Just a reminder:** No formal evening wear required on our voyages but if you would like to bring something a little more dressy for the Captain's welcome and farewell cocktails you may certainly do so.

## ADDITIONAL ITEMS

- ☐ Passport, visas, immunization records, travel documents, etc. as required
- ☐ Camera gear—complete with charger, storage medium, transport and cleaning kit (lens cloth etc.) and extra batteries
- ☐ Reusable waterproof bags or plastic bags with zippers (to keep small items organized and cameras dry)
- ☐ Voltage converters and plug adapters (see ship book for details)
- ☐ Seasickness, indigestion, headache, or other medications
- ☐ Earplugs and eye masks for sleeping
- ☐ Moisturizer for face and hands (skin dryness due to wind and temperature changes)
- ☐ Credit card and small amount of local currency (see pre-departure book for more details)

- › To view our packing checklist online, visit: [QuarkExpeditions.com/What-to-Pack/Arctic](https://QuarkExpeditions.com/What-to-Pack/Arctic)
- › Related topics are covered on our Frequently Asked Questions page: [QuarkExpeditions.com/Frequently-Asked-Questions](https://QuarkExpeditions.com/Frequently-Asked-Questions)



Scan this QR code or [click here](#) to watch our video on what to pack before you go.

## WEATHER CONDITIONS & TEMPERATURES

Polar weather is extremely variable; temperatures may hover around the freezing mark and winds can be strong. The extended daylight warms sheltered areas so that you may sometimes find it warm enough for t-shirts. However, you may encounter rain, snow squalls, fog and white-outs during an expedition and should be ready for any conditions.





To book your next adventure  
Contact your Travel Professional  
or a Quark Expeditions®  
Polar Travel Adviser

**Toll free and local numbers:**

North America (Toll Free) 1 888 332 0008

U.K. Tel +44 203 514 2712

U.K. (Toll Free) 0 808 120 2333

Australia Tel +61 2 72580333

Australia (Toll Free) +61 1800 953518

France Tel +33-1 80 14 01 05

France (Toll Free) 08 05 08 66 46

[QuarkExpeditions.com](https://www.QuarkExpeditions.com)

Photos captured with a telephoto lens from a responsible  
distance, following regulatory/AECO guidelines.

PHOTO CREDITS: (over all Expedition Brochures for the Arctic 2027 season):

Acacia Johnson; David Merron; Nicky Souness; Samantha Crimmin; Sam Edmonds; Michelle Sole; Cindy Miller  
Hopkins; Sue Flood; Hugo Perrin; Peter Lindstrom; Gajan Balan; Jonas Fellenstein; Nicolas Singh; Rogelio Espinosa;  
Grange Productions; Visit Greenland; Visit Scotland; Newfoundland Labrador; Fokus Productions; Adobe Stock; iStock

EXPEDITION BROCHURE  
January 26, 2026



P O L A R

O B S E S S E D

S I N C E

1 9 9 1

